

# *Eucalyptus viminalis*

Myrtaceae

New South Wales, Tasmania (Australia)

**Am:** *Key babir zaf*

**Eng:** *Manna gum, Ribbon gum*

## Ecology

This tree grows in Moist and Wet upper Weyna-Dega, the whole Dega and lower Frost agroclimatic zones and does well in well-drained deep soils in Shoa, Harerge, Arsi and Kefa, 2,000-3,400 m. A good alternative to *E. globulus* at higher altitudes.

## Uses

Firewood, poles, timber (light construction, boxes, veneer, plywood, building, flooring), bee forage, ornamental, windbreak, paper (short-fibre pulp).

## Description

A slender upright tree, reaching 30–50 m. The clean white trunk bears thin, bendy branchlets and the bole may be 1.5 m in diameter. The tree is strongly light demanding. **BARK:** Often all white or rough grey at the base, long ribbons of bark shed from the upper trunk or branches, frequently hanging in branch forks. **LEAVES:** Young leaves characteristically opposite without stalks. Mature leaves stalked 10–20 cm, narrow and pointed, pale green. **FLOWERS:** Beside leaves, in threes, no stalks and bud cap conical. **FRUIT:** Stalkless, in threes, at right angles to each other, base rounded, 5–8 mm across the 3–4 valves protruding.

## Propagation

Seedlings.

## Seed

300,000–400,000 seed per kg.

**Treatment:** Not necessary, germinates in 5–6 days.

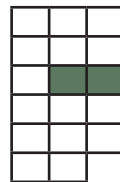
**Storage:** Can be stored for several years in a dry, cold and airtight container.

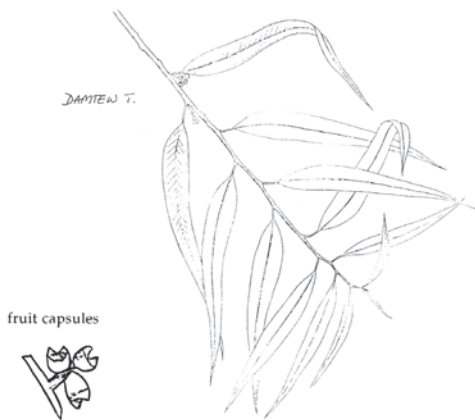
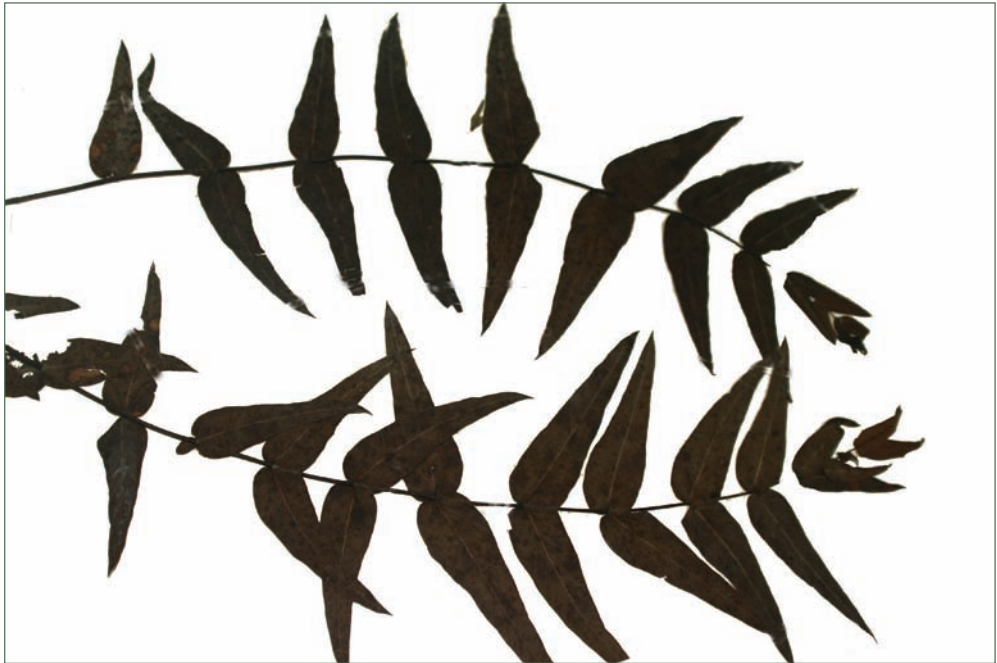
## Management

Coppicing.

## Remarks

It is fire and frost resistant but the sapwood is susceptible to attack by wood borers. The pale yellow or pink wood is moderately hard, the grain is straight, but wood is not strong or durable. In Ethiopia, it is useful for poles and fuel and grown in homesteads, woodlots and along pathways. The branchlets bend easily and have been used for weaving. White, sugary sap spilling out from young shoots gives it the name 'magna' gum in Amharic.





fruit capsules



buds

