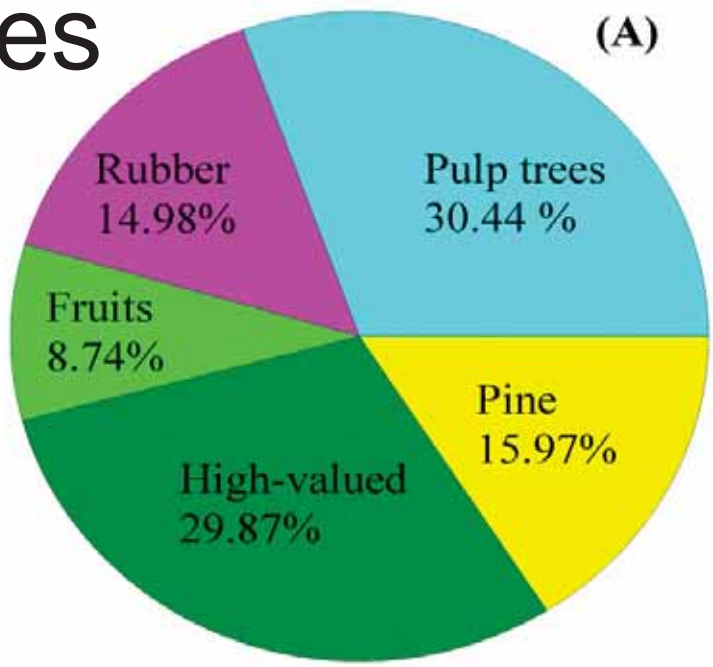




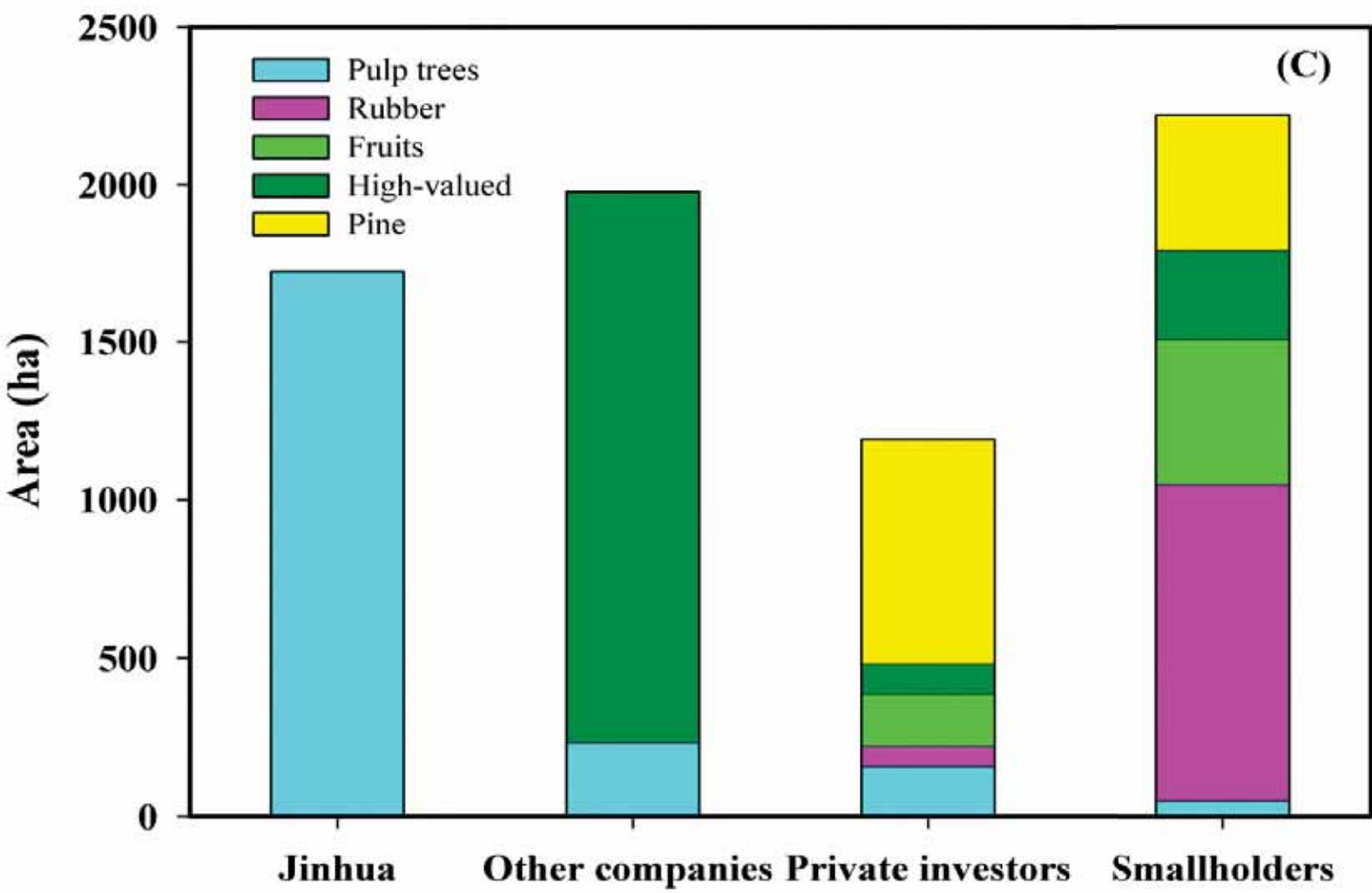
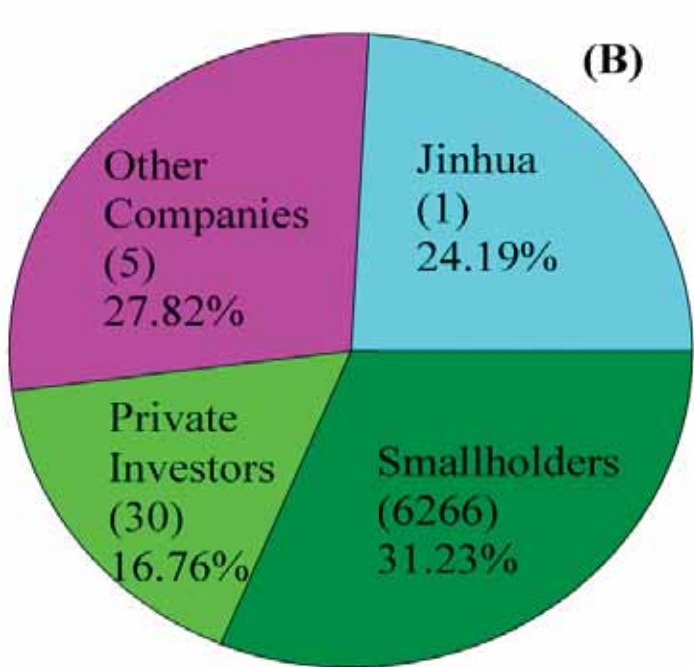
Stakeholders of tree (+ or -) change

Exploring Mekong Future

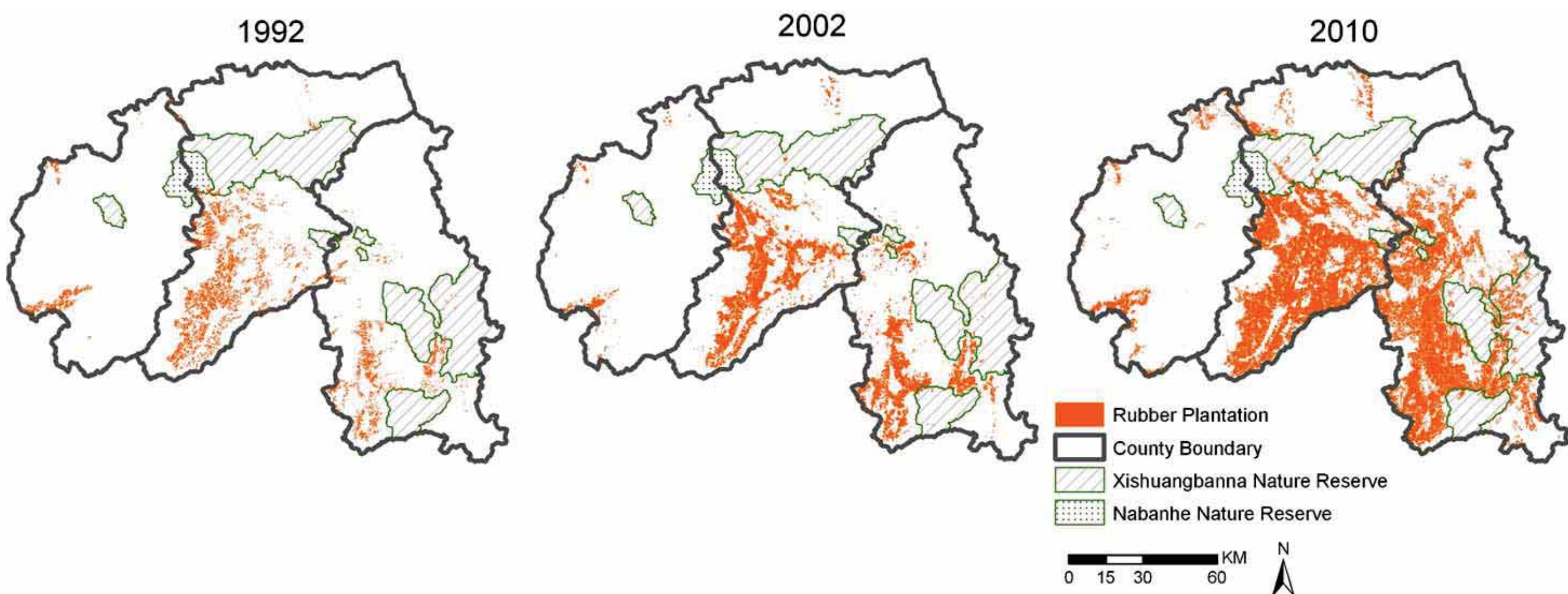
The high-valued trees



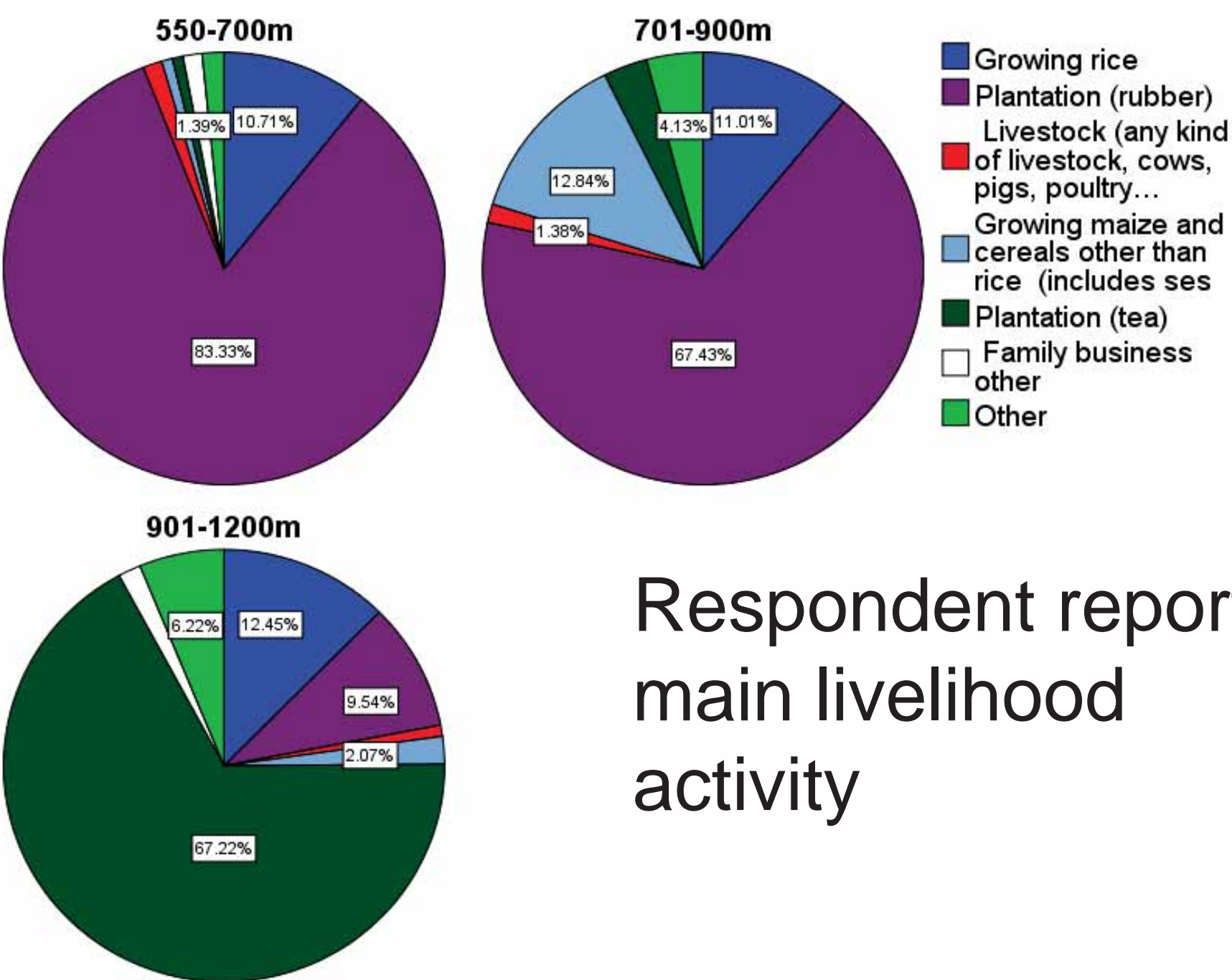
Agents involved in the SLCP



The percentage taken by each planted species under the SLCP (2002-2008)

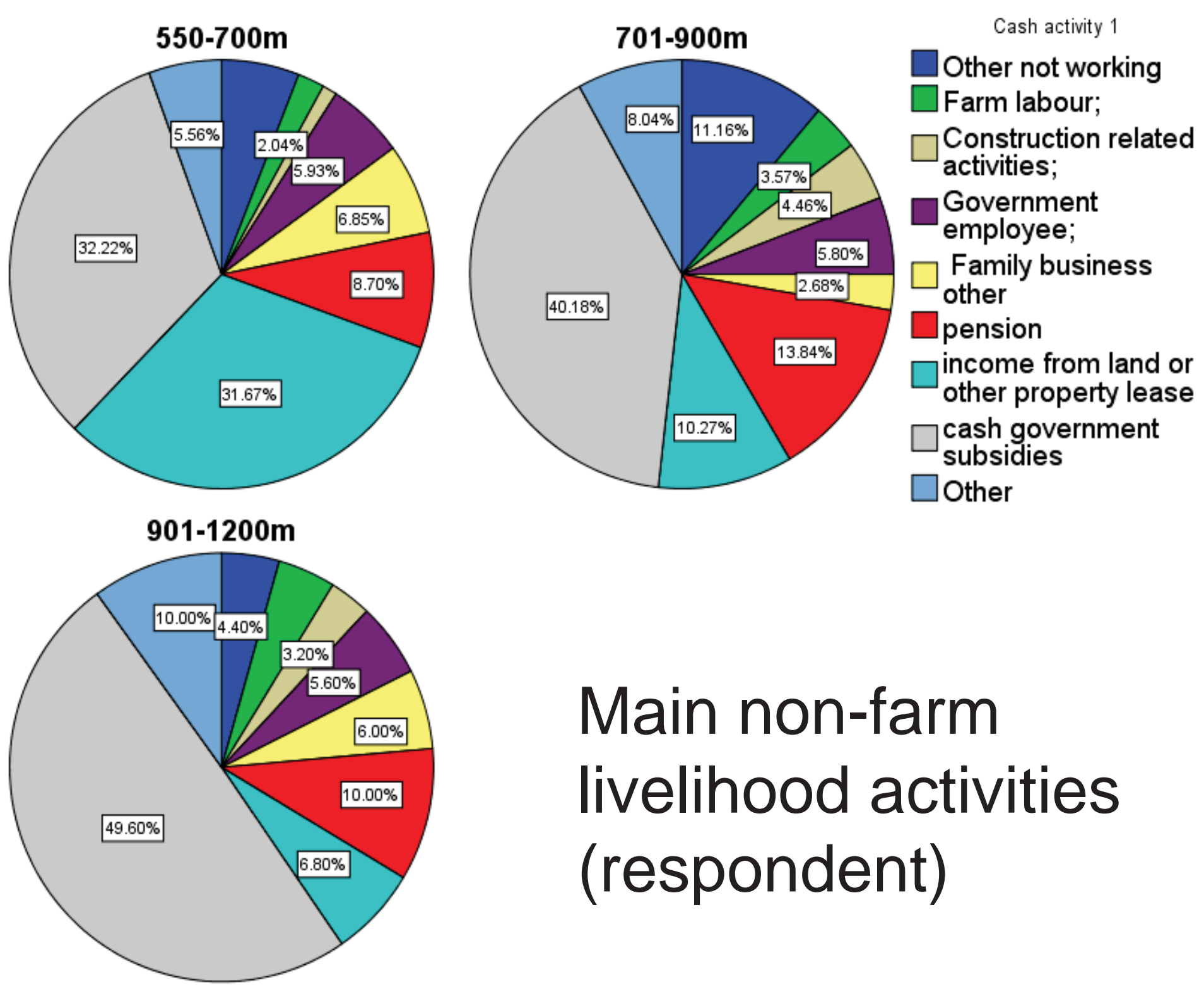


Reforested area of different species during the SLCP by each agent



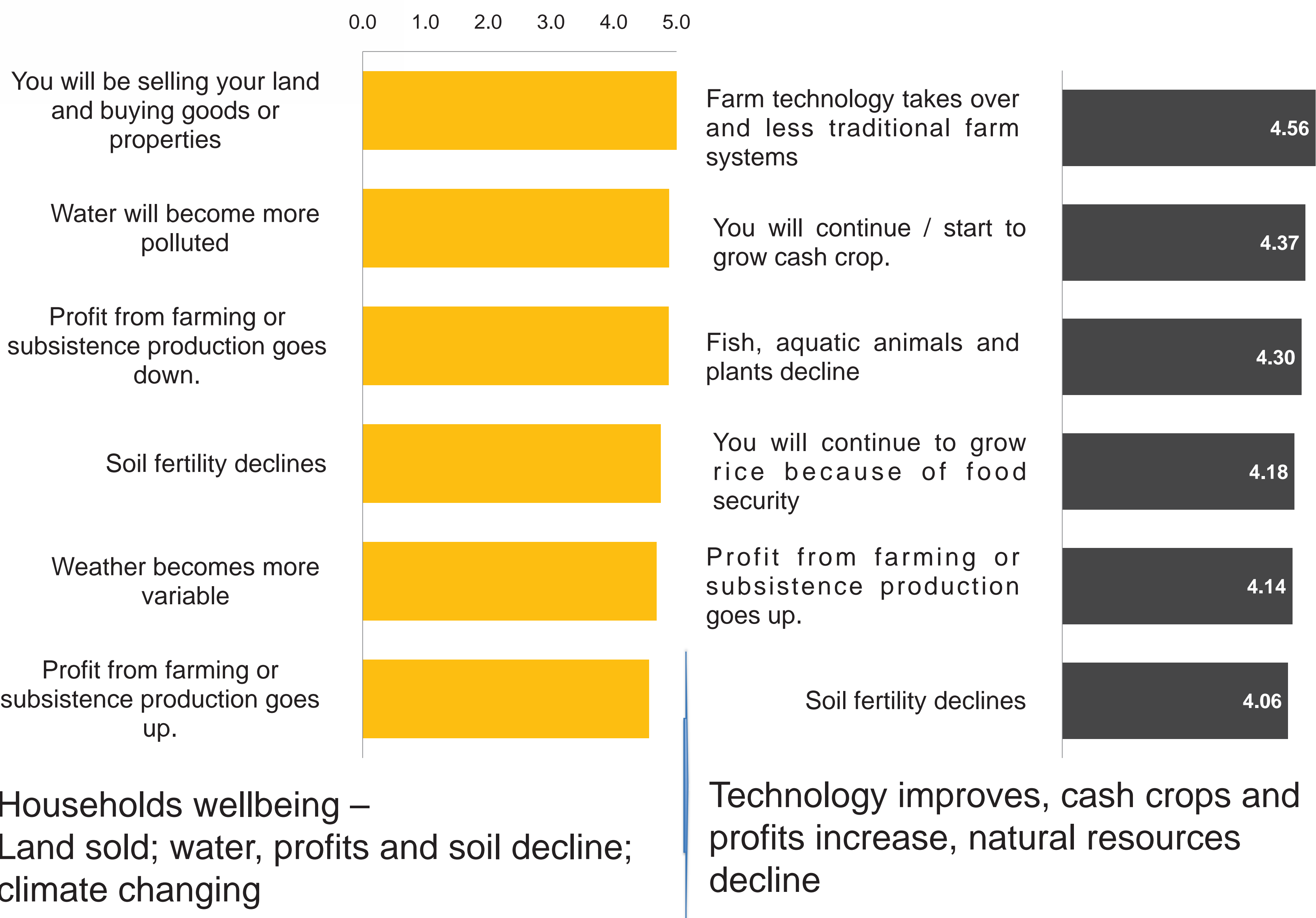
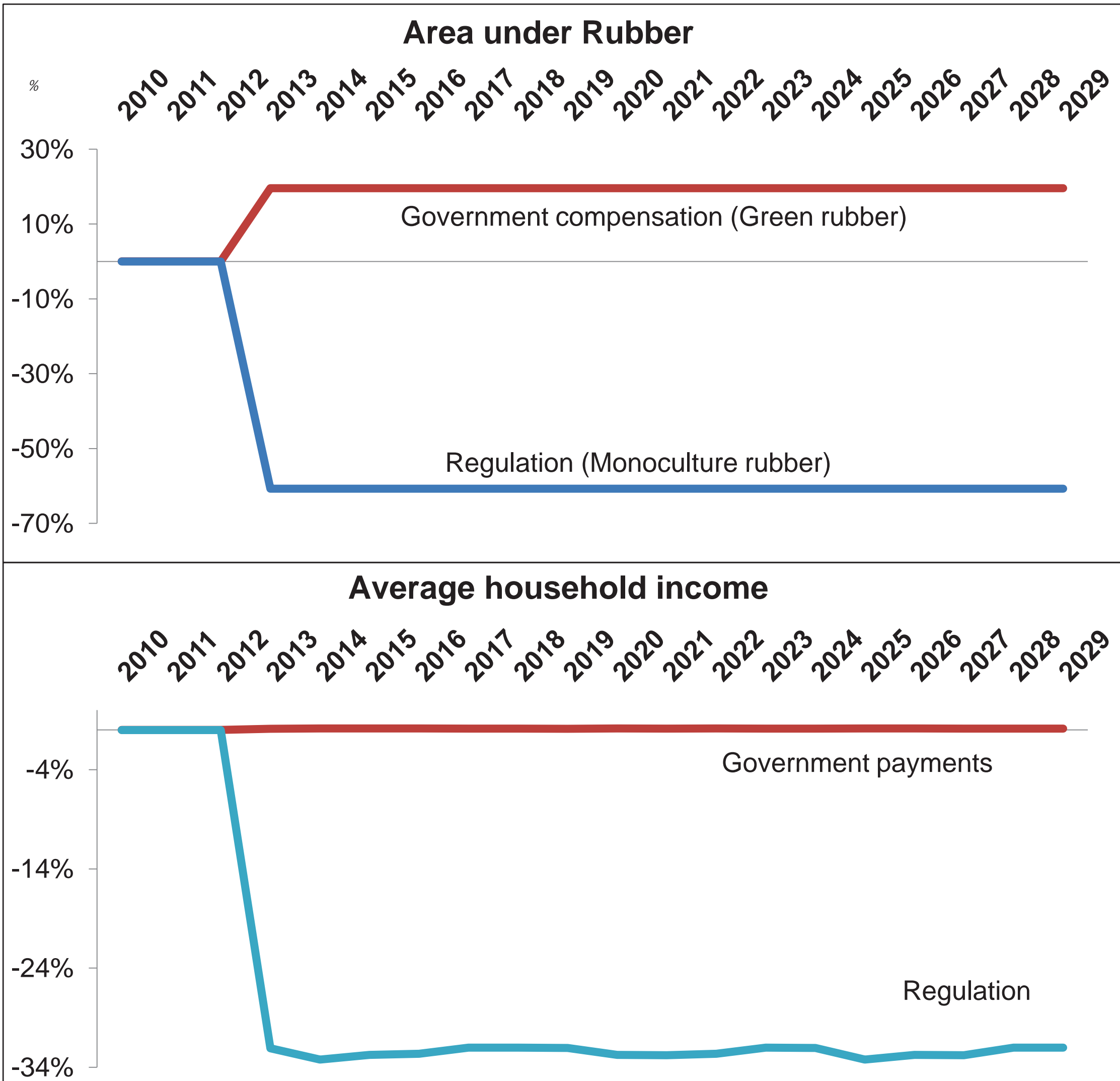
Respondent reported main livelihood activity

Livelihood survey



Main non-farm livelihood activities (respondent)

Rubber expansion can be reversed, if Government provides payments/compensations



Yufang Su, ICRAF East Asia Node
suyufang@mail.kib.ac.cn