

South and Southeast Sulawesi, Indonesia

Annual Rainfall:
2000-4000 mm South Sulawesi
1600 mm Southeast Sulawesi

Tree cover transitions in space and time

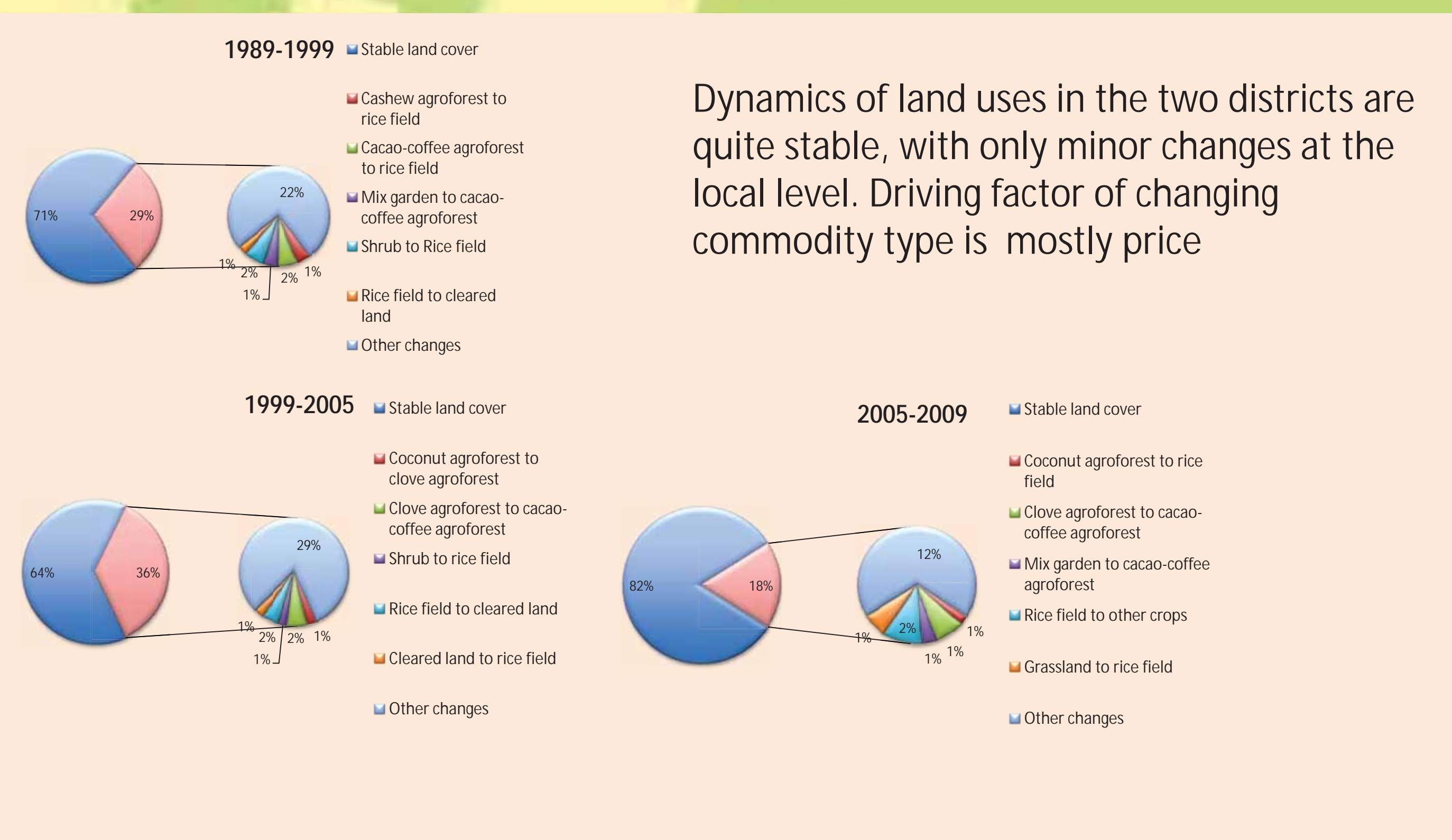
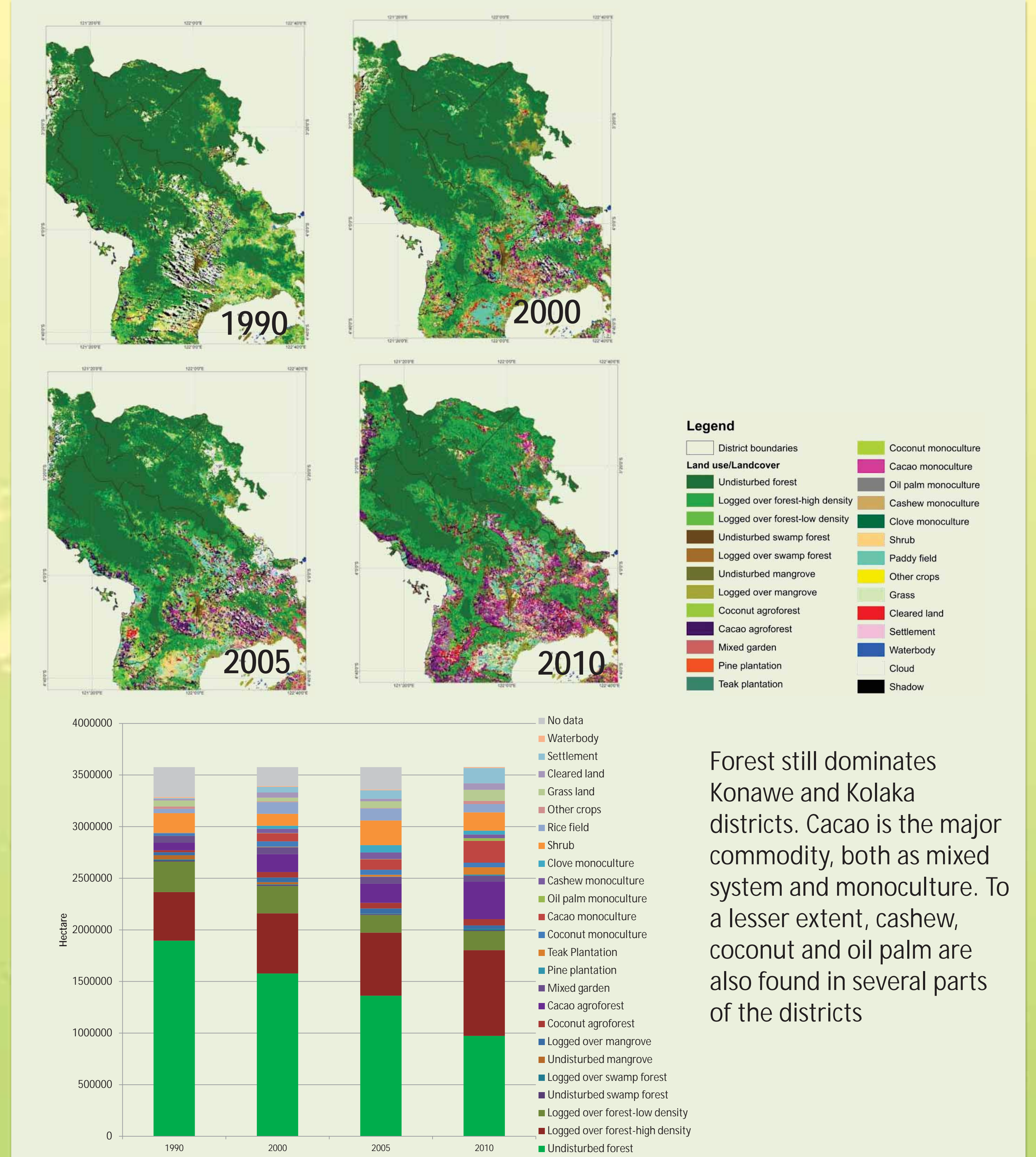
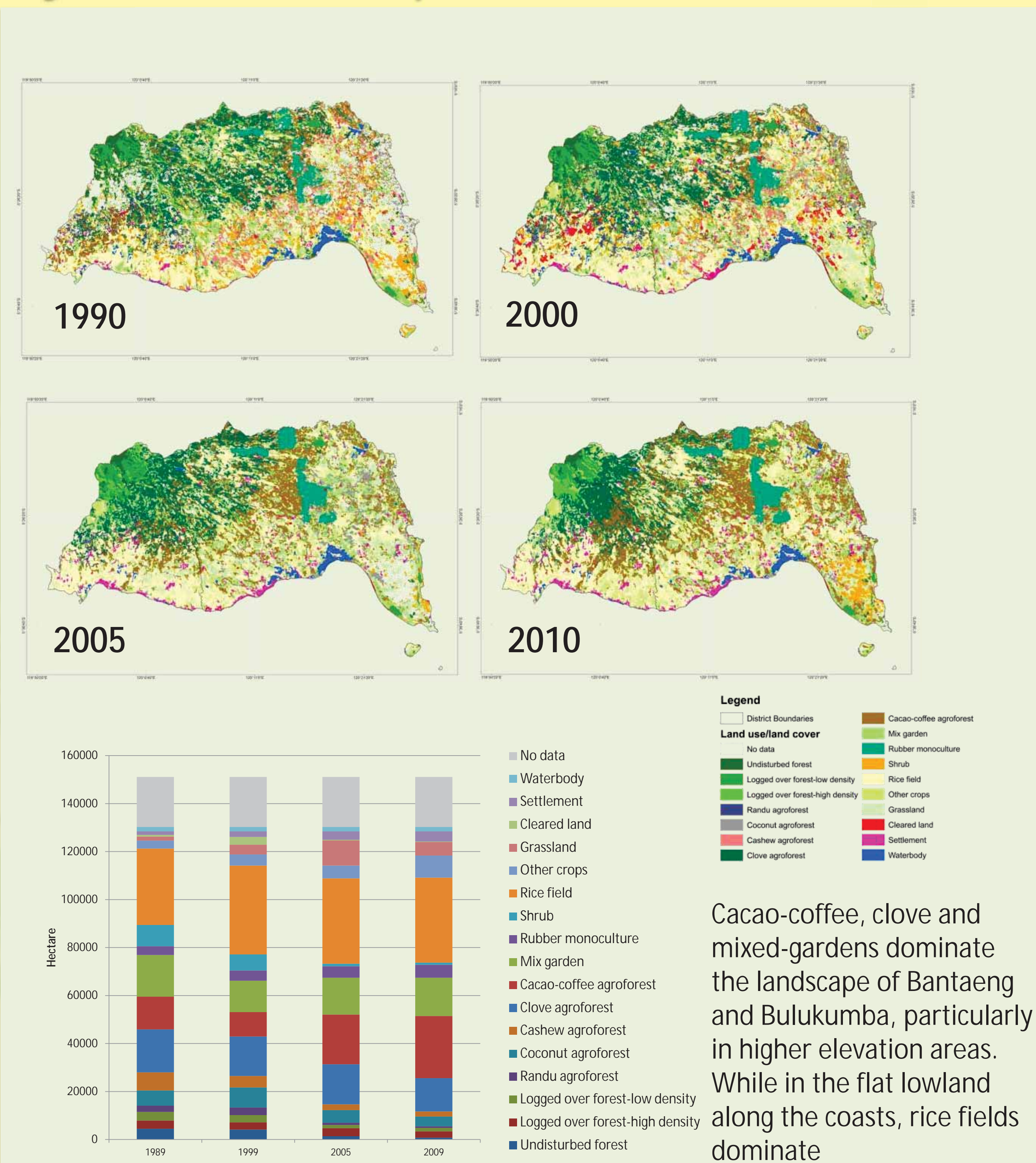
Trees and crops in Bantaeng-Bulukumba



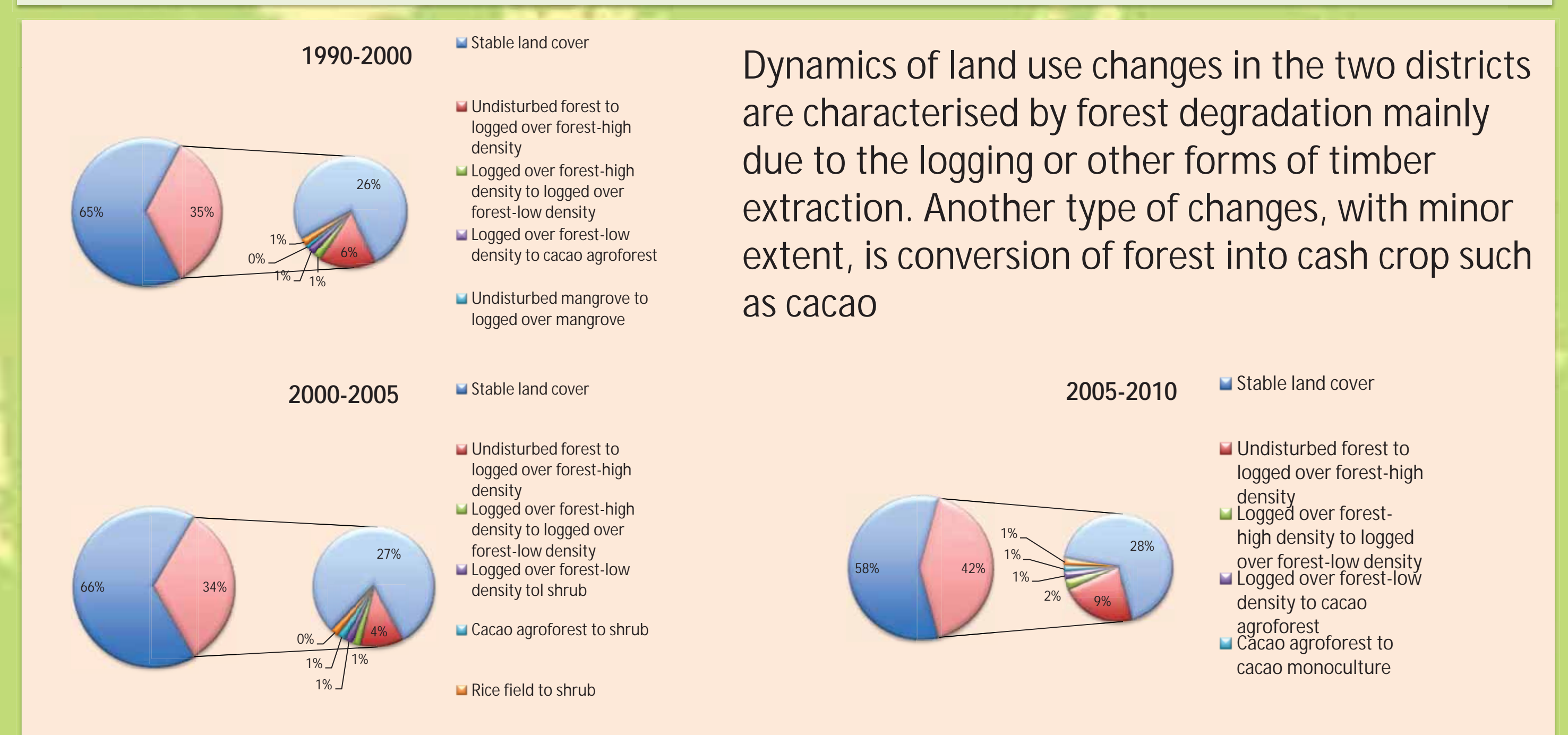
Trees and crops in Kolaka-Konawe



Dynamics across space and time.....



Dynamics of land uses in the two districts are quite stable, with only minor changes at the local level. Driving factor of changing commodity type is mostly price



Dynamics of land use changes in the two districts are characterised by forest degradation mainly due to the logging or other forms of timber extraction. Another type of changes, with minor extent, is conversion of forest into cash crop such as cacao

Prepared by: Elissa Dwiyantri, Atiek Widayati

For further information please contact:
Atiek Widayati (a.widayati@cgiar.org)



World Agroforestry Centre Southeast Asia Regional Program
Jl. CIFOR, Situ Gede, Sindang Barang, Bogor 16115
P.O. Box 161, Bogor 16001 West Java, Indonesia
http://www.worldagroforestry.org/regions/southeast_asia