

South and Southeast Sulawesi, Indonesia

Annual Rainfall:
2000-4000 mm South Sulawesi
1600 mm Southeast Sulawesi

Direct benefits from trees on farm?

South Sulawesi

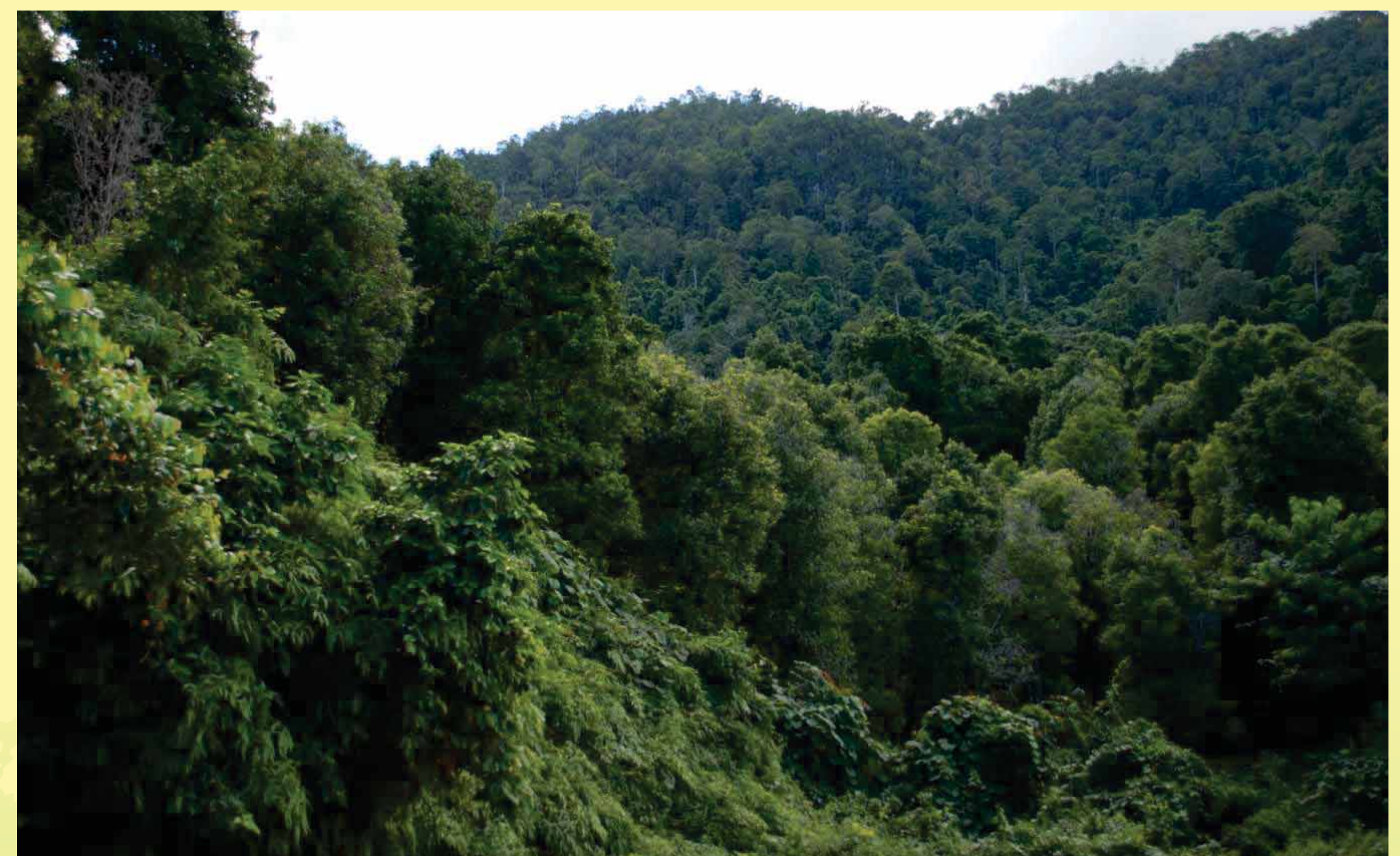
Mixed tree gardens (cacao, coffee, clove, fruits) and cacao agroforestry systems dominant the landscape. Timber-based agroforestry system dominant in some places and rubber is become a common smallholder crop. The average landholding is 1.4 ha. Clove agroforestry is the most profitable system per area, followed by mixed tree gardens. Cacao is an important component of mixed systems. Cacao-coffee systems are half as profitable as mixed systems.

Southeast Sulawesi

Cacao agroforestry accounts for 12-63% of landuse at the village level and bush fallow accounts for 8-30%. Oil palm and rubber are becoming established. The average landholding is 3.4 ha, with bush fallow account for 1.2 ha. Bush fallow is available for agriculture expansion. Pepper, timber and patchouli systems are the most profitable per area, but cover a small portion of the total landscape. Cacao is the single greatest sources of income.

Environmental Services

Smallholder agroforestry systems also provide environmental services to the general public. The chief environmental services in South and Southeast Sulawesi are carbon storage, agrobiodiversity, and watershed protection (clean and abundant water).



cacao



coffee



rubber



cloves



pepper



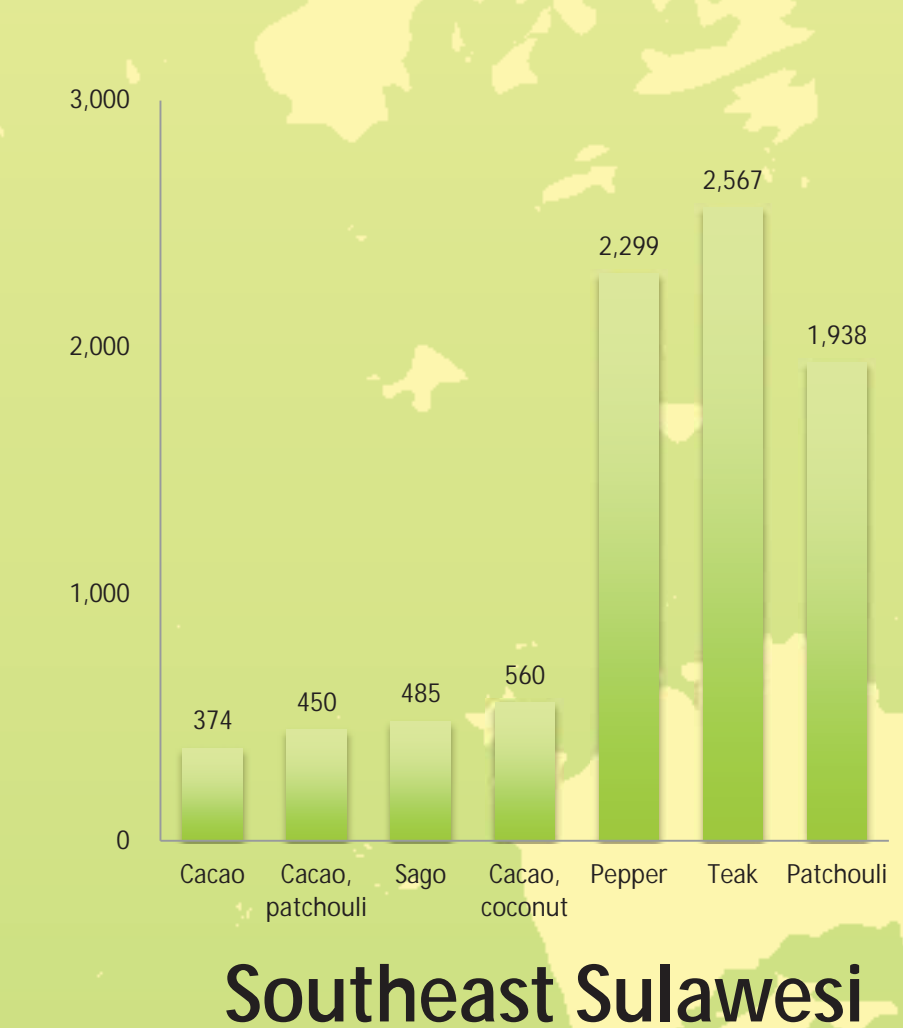
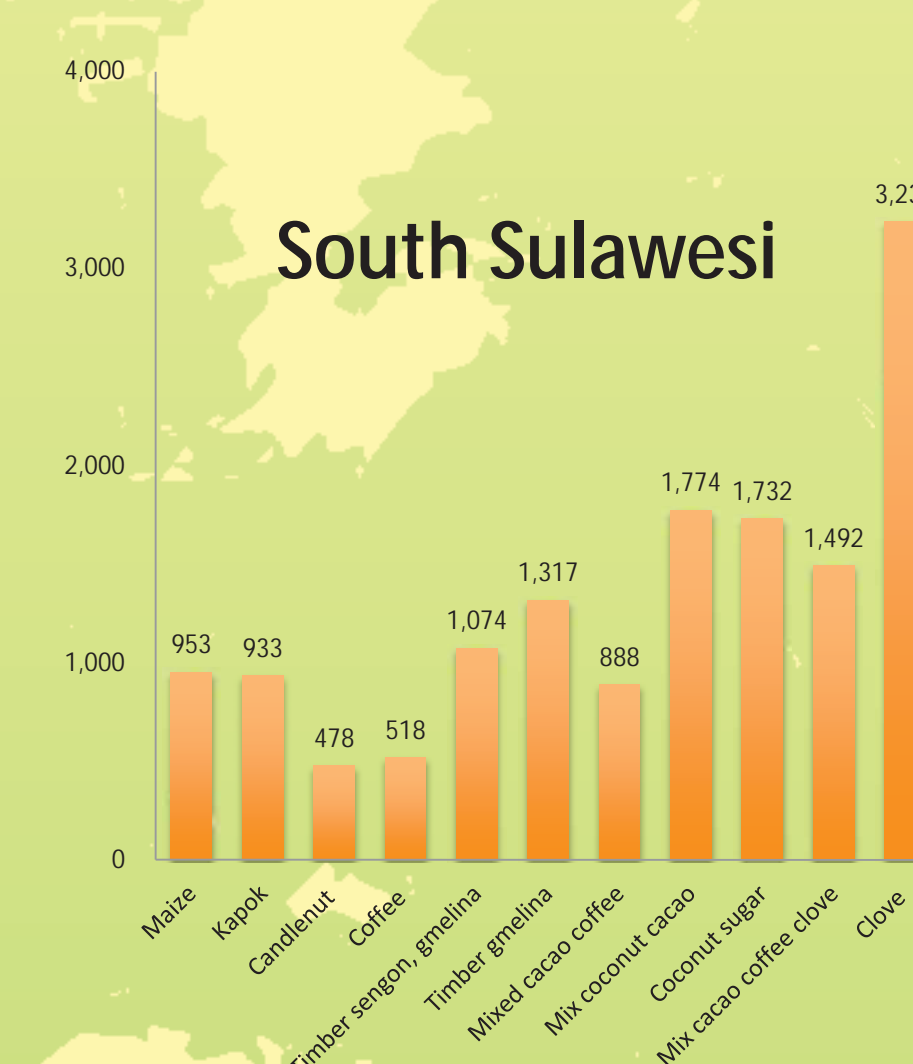
timber



kapok



candlenut



Profitability result (\$/ha/yr)

..... AND WILL AVOID US FROM:



Flood in Kendari city (Southeast Sulawesi) last July 2013: the biggest and worse ever in the history of the city!

Photo: courtesy of Google Image, A Ayat, A Prahmono, E Martini, Janudianto and ICRAF Archive

Prepared by: Janudianto, James M Roshetko, Noviana Khususiyah, Isnurdiansyah, S Suyanto

For further information please contact:
Janudianto (janudianto@cgiar.org) or
J. Roshetko (j.roshetko@cgiar.org)



World Agroforestry Centre Southeast Asia Regional Program
Jl. CIFOR, Situ Gede, Sindang Barang, Bogor 16115
P.O. Box 161, Bogor 16001 West Java, Indonesia
http://www.worldagroforestry.org/regions/southeast_asia