

# Assessment of Current and Future Hydrological Conditions Using the GenRiver Model: evaluating the existing PES scheme in Cidanau watershed

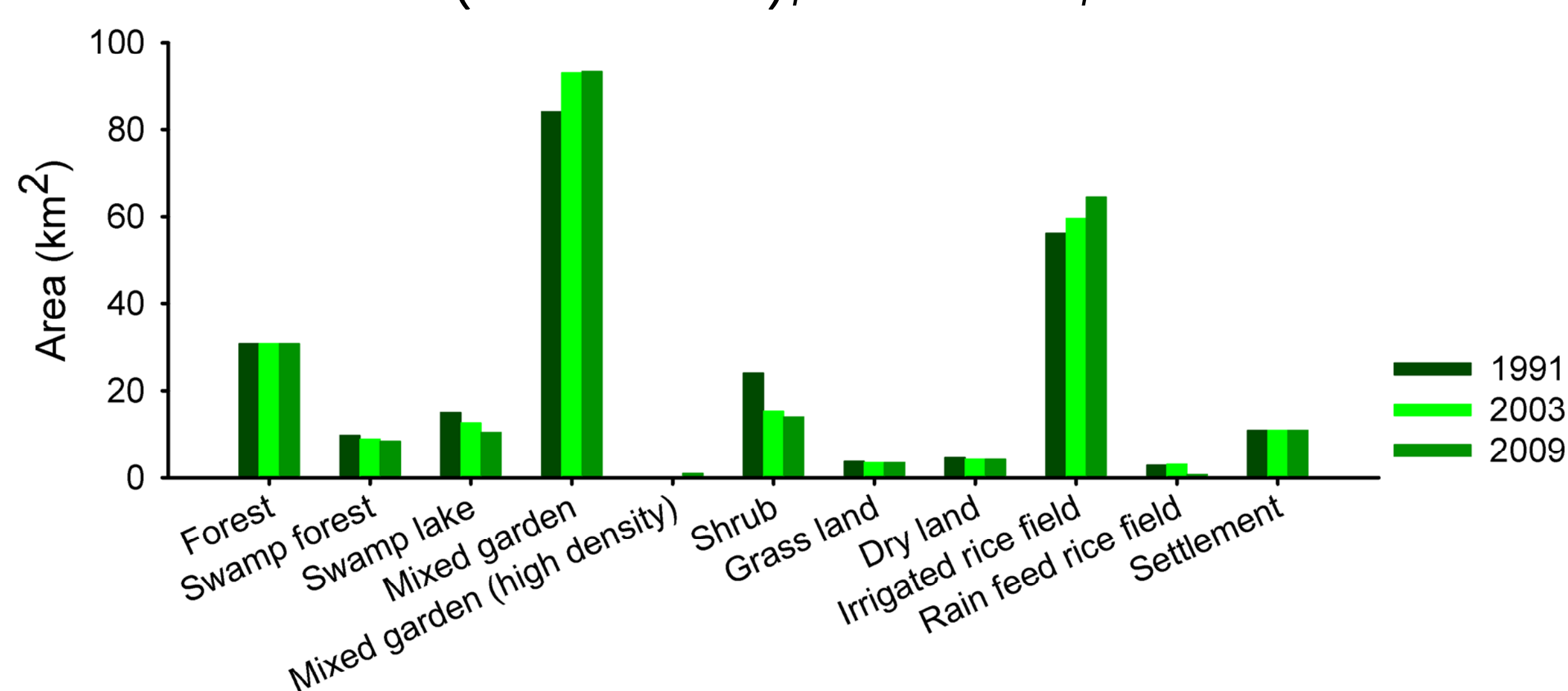
Ni'matul Khasanah, Lisa Tanika, Betha Lusiana, Tonni Asmawan, Zuraidah Said  
World Agroforestry Centre (ICRAF), Southeast Asia regional programme, Bogor, Indonesia

## Background

- Ecological functions of watersheds, including hydrological functions, are directly linked to human well-being; they respond to changes in land cover, climate and engineering of the river flow and its buffering in wetlands,
- The Cidanau watershed in western Java (Banten province) provides water to downstream communities as well as companies. An industrial water supply company experimented with a payment scheme for watershed services, jointly with a multi-stakeholder forum and local governments.
- Initial focus of payment scheme was on increasing the tree density of existing agricultural systems in an area of 100 ha.
- We applied a hydrological model, GenRiver, to analyze the effectiveness of the existing scheme and some of its alternatives

## Study site

Cidanau watershed (241.64 km<sup>2</sup>), West Java, Indonesia

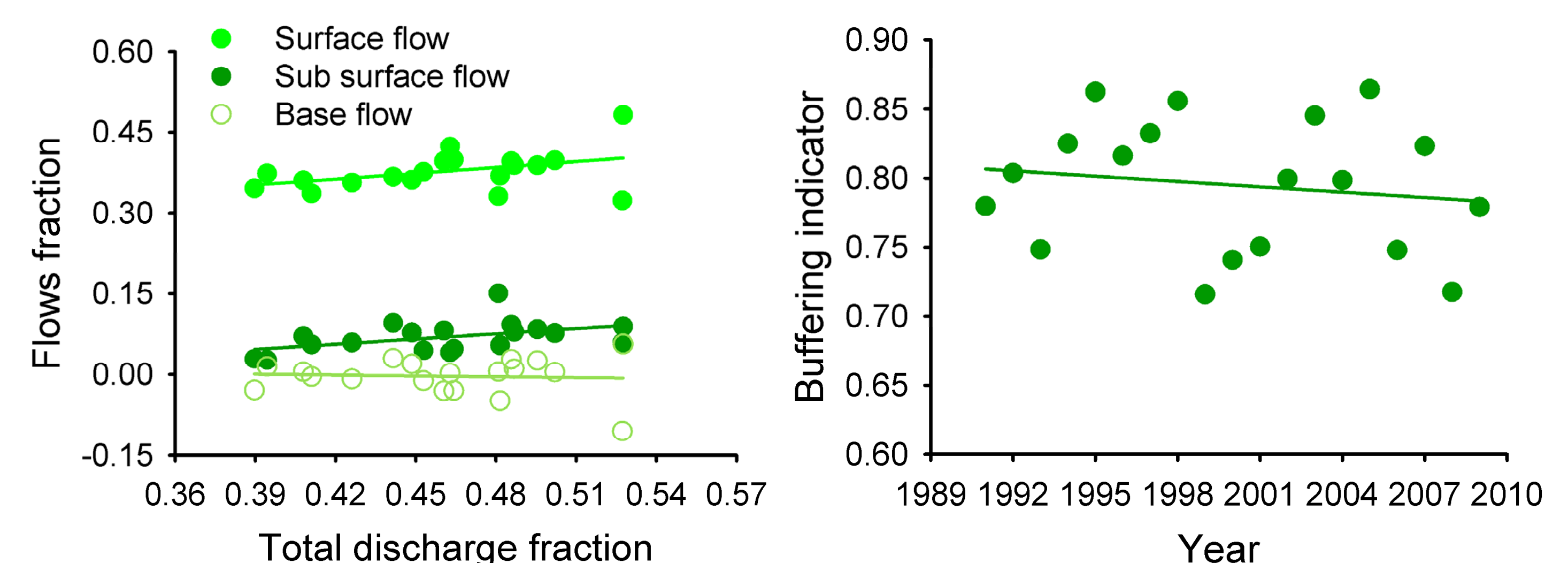


## Modeling Steps

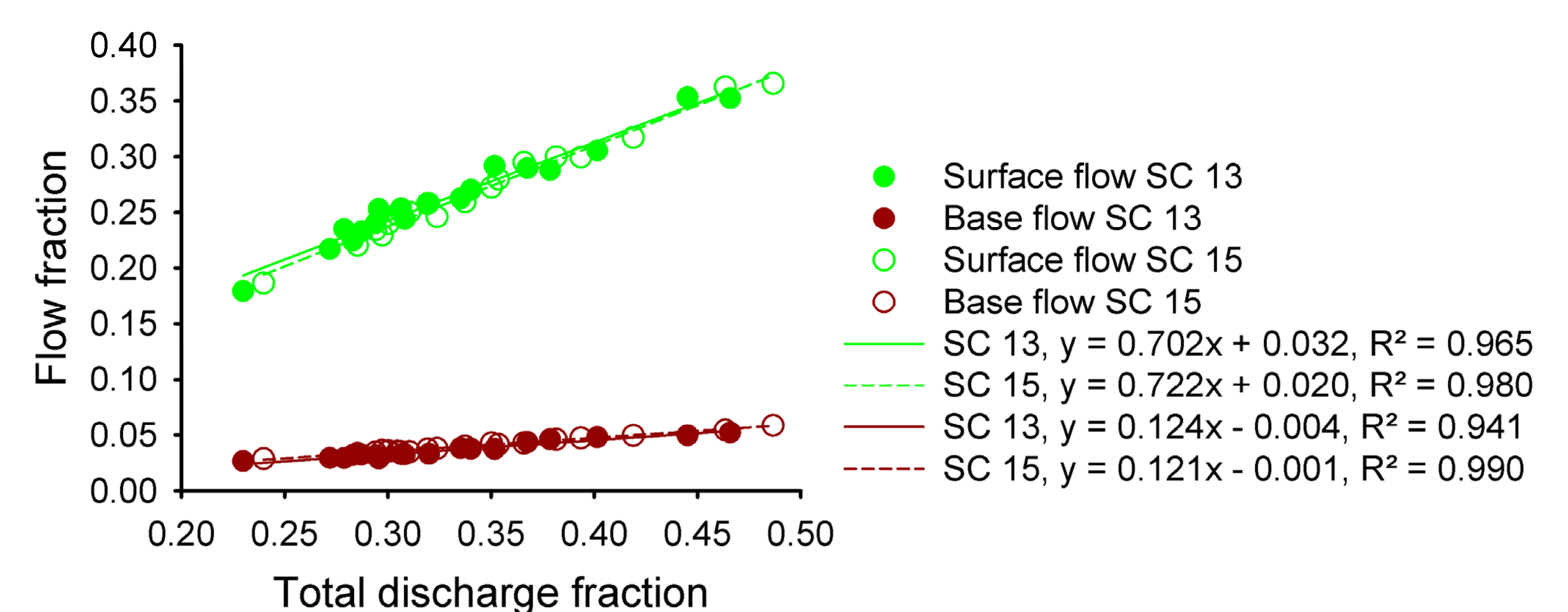
- Consistency test of rainfall and discharge data,
- Analysis of watershed characteristic (land cover, soil, boundary and river network),
- Calibration by comparing measured and simulated discharge based on six years data,
- Evaluating current condition at catchment and sub catchment level (SC 13\_more tree and SC15\_less tree),
- Evaluating future condition (10 year) based on land cover change scenarios at catchment scale:
  - swamp forest → irrigated paddy field (SWAMP\_PADDY),
  - increasing tree density of existing tree-based systems (MORE\_TREE),
  - shrub, grassland, irrigated paddy field and clear land → tree-based systems (MORE\_AF),
  - combined scenario B and C (MORE\_TREE-AF)
- Evaluating future condition (10 year) of conversion of swamp forest into irrigated paddy field at sub catchment scale (SC 4)

## Historical and Current Condition

### Catchment scale

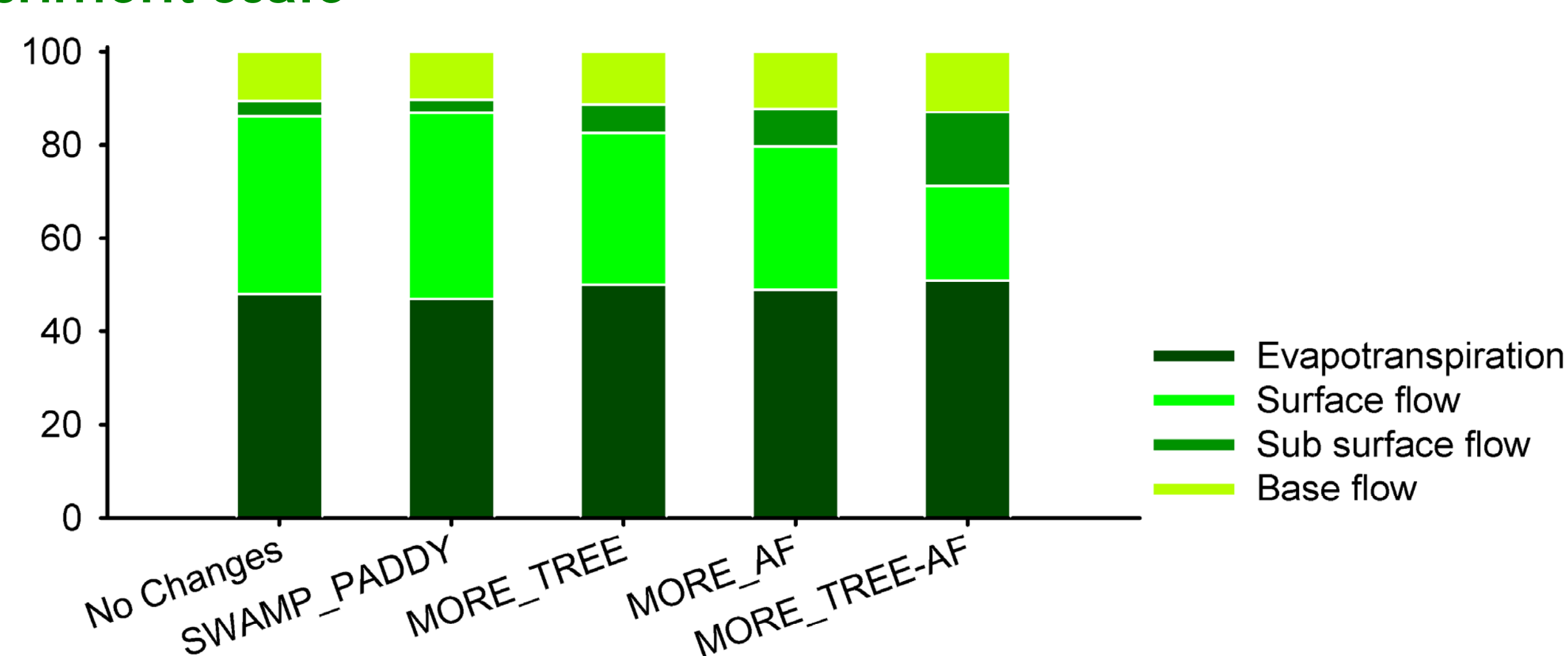


### Sub catchment scale

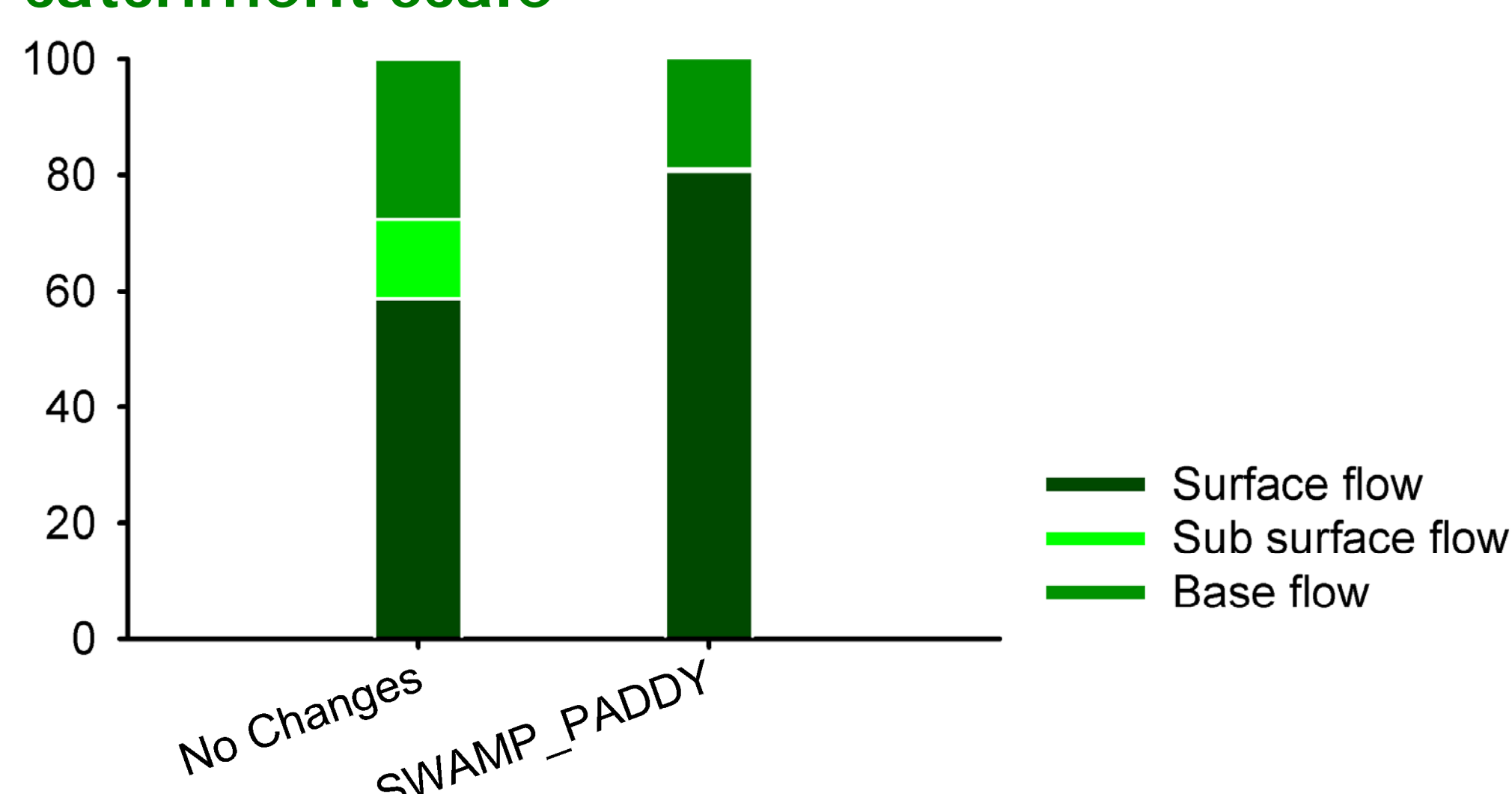


## Future Condition

### Catchment scale



### Sub catchment scale



## Conclusion

- The presence of tree-based systems, forest and peat swamp/lake in the upstream area all contributes to current hydrological function of Cidanau watershed.
- Increasing area and density of tree-based systems in the watershed can enhance the water balance and enhance buffering of river discharge of the watershed, although the current size of area for PES scheme is too small to expect measurable impact given the size of the watershed.
- Further prioritization among sub watersheds is needed.

For more information, please contact:

Ni'matul Khasanah

World Agroforestry Centre – ICRAF SEA regional programme

Jl. CIFOR, Situ Gede, Sindang Barang, Bogor 16680 PO Box 161, Bogor 16001, Indonesia

Tel: +62 251 8625415; Fax: +62 251 8625416; Email: n.khasanah@cgiar.org