

# Contents

|   |           |
|---|-----------|
| <b>Foreword</b>                                     | <b>3</b>  |
| <b>Preface</b>                                      | <b>9</b>  |
| <b>Contributors</b>                                 | <b>11</b> |
| <b>Acknowledgments</b>                              | <b>20</b> |
| <b>Abbreviations and acronyms</b>                   | <b>21</b> |
| <b>The story of landcare in the Philippines</b>     | <b>23</b> |
| <b>Introducing this manual</b>                      | <b>35</b> |
| The purpose of this manual                          | 35        |
| Who is this manual for?                             | 35        |
| How to use this manual                              | 36        |
| <b>Section 1. What is landcare?</b>                 | <b>39</b> |
| The seven principles of landcare                    | 39        |
| How does landcare work?                             | 42        |
| What issues does landcare address?                  | 44        |
| Landcare's entry point: conservation farming        | 52        |
| The main technologies used in landcare              | 54        |
| Everyone can play a part                            | 55        |
| Summary – What is landcare?                         | 57        |
| <b>Section 2. Is landcare for you?</b>              | <b>59</b> |
| The benefits of landcare                            | 59        |
| The costs, risks and challenges of landcare         | 71        |
| How landcare links with other programs and projects | 75        |
| The important role of the landcare facilitator      | 78        |
| Summary – Is landcare for you?                      | 83        |
| <b>Section 3. How to get landcare started</b>       | <b>85</b> |
| The seven steps to getting landcare started         | 85        |
| Step 1. Identify the target site and farmers        | 86        |
| Step 2. Get to know the local situation             | 89        |
| Gathering as much information as you can find       | 89        |
| Talking to stakeholders                             | 91        |



|   |            |
|---|------------|
| Step 3. Gain broad agreement and support from stakeholders                | 93         |
| Identifying the stakeholders  | 93         |
| Arranging a presentation forum for stakeholder representatives            | 94         |
| Preparing your presentation   | 95         |
| Presenting your proposal  | 95         |
| Step 4. Contact farmer leaders and arrange a process for engaging farmers | 100        |
| Step 5. Orientate farmers to the program and form landcare groups         | 102        |
| Orientating the farmers to the program                                    | 102        |
| Forming the landcare groups   | 103        |
| Step 6. Identify and plan landcare group activities                       | 104        |
| Holding planning meetings with the farmer groups                          | 104        |
| Examples of landcare group activities                                     | 107        |
| Step 7. Implement landcare group activities                               | 110        |
| Conducting a farmer cross-visit   | 110        |
| Delivering on-farm training   | 113        |
| Establishing a learning site  | 114        |
| Implementing livelihood and income-generating activities                  | 114        |
| Implementing social activities  | 116        |
| Communicating with farmers in the field                                   | 116        |
| Summary – How to get landcare started                                     | 117        |
| <b>Section 4. How to keep landcare going</b>                              | <b>119</b> |
| Keeping landcare groups going   | 119        |
| Building on the landcare group structure                                  | 131        |
| Staying strong as a landcare facilitator                                  | 136        |
| Supporting the expansion of landcare to new sites                         | 138        |
| Summary – How to keep landcare going                                      | 139        |
| <b>Glossary</b>   | <b>141</b> |
| <b>Further reading</b>  | <b>143</b> |





## List of stories

|   |     |
|---|-----|
| Marcelino's 'Garden of Eden' – a product of landcare                        | 24  |
| Natural vegetative strips and the 'cow's-back' method of ploughing contours | 25  |
| Changing attitudes and practices, not just technologies                     | 26  |
| A landcare dream come true  | 34  |
| Landcare leaves a legacy for our grandchildren                              | 41  |
| Extending the life span of Pilar's water supply                             | 45  |
| Landcare transcends tensions in Mindanao                                    | 48  |
| Landcare benefits the lowlands  | 51  |
| Children teaching parents   | 56  |
| Diverse crops transform barren land into a model landcare farm              | 61  |
| Landcare brings healthy soil and more regular income                        | 62  |
| Farming in the foothills of Mt Apo Natural Park                             | 64  |
| Church ministry 'converts' South Cotabato family to landcare                | 65  |
| Controlling erosion for neighbourly relations                               | 65  |
| A foundation for the Philippines' farming future                            | 67  |
| A hog for every woman   | 70  |
| Healthier and wealthier vegetable production                                | 72  |
| Landcare adds value to Upland Development Programme in South Cotabato       | 77  |
| Building friendships is the key to building partnerships                    | 82  |
| Bohol province integrates landcare approach with local government units     | 88  |
| Finding out about what is already going on                                  | 90  |
| Starting with the backyard vegetable garden at Malisbong                    | 92  |
| Partnering with Indigenous peoples to conserve native trees                 | 97  |
| Local government unit supports farmers to implement landcare                | 98  |
| Cross-visits inspire farmers and government officials                       | 108 |
| Replanting forests to secure water and livelihoods in Agusan del Sur        | 112 |
| Diversify, diversify, diversify!  | 115 |
| Mayor passes ordinance for contour farming in Bohol                         | 121 |
| Landcare can benefit LGUs and non-government organisations                  | 122 |
| Bohol women's landcare group flourishes                                     | 125 |
| Growing the right potato for the right market                               | 127 |
| Pooling resources to plant 15,000 trees in Claveria                         | 129 |
| Seeing is believing for Bohol farmers                                       | 132 |
| Lantapan Landcare Association brings bargaining power and camaraderie       | 133 |







## Preface

Never before have the twin challenges of addressing livelihood improvement and natural resource management in the Philippine rural uplands been as pressing as they are now. The passage of the Local Government Code of 1991 (Republic Act No. 7160), which devolved and decentralised national government services and programs, gave greater autonomy and power to the country's many provinces, municipalities and *barangays* and brought these twin issues to the forefront of the development agenda. Similarly, it gave greater responsibility to the local government units to be more creative in finding solutions to these problems. Among the services devolved to the local government units is the delivery of agriculture and natural resource management extension.

Landcare is an alternative model for extension that can be adopted or adapted by our local government units, national government agencies and other key development players. It is a people-centred approach for extension that brings all key stakeholders in the community together to learn and jointly address a broad range of livelihood issues that confront them. The issues may be degradation of resources on the farm, low farm productivity, poor marketing systems or even bigger issues that affect the wider community.

Facilitating the local people to act on these issues is of fundamental importance in landcare. Facilitators guide the people to come together, talk among themselves, analyse their problems, and identify and implement the solutions to their problems. Facilitators help make the community aware of the problems, and build and develop the community's capacity to innovate, test and implement new practices.

This manual is a product of the rich experiences of landcare facilitators from a series of landcare projects mainly supported by the Australian Government through the Australian Centre for International Agricultural Research (ACIAR) and the Australian Agency for International Development (AusAID). Their experiences were enriched by funding support from the Agencia Española de Cooperación Internacional (Spanish Agency for International Cooperation) and the many other partners of the Landcare Foundation of the Philippines, Inc. The facilitators began by introducing simple conservation farming practices in the sloping farmlands; later their work evolved to helping communities address broader livelihood issues such as managing soil fertility, diversifying farming systems and, more recently, gaining better access to markets for farmer landcare groups.

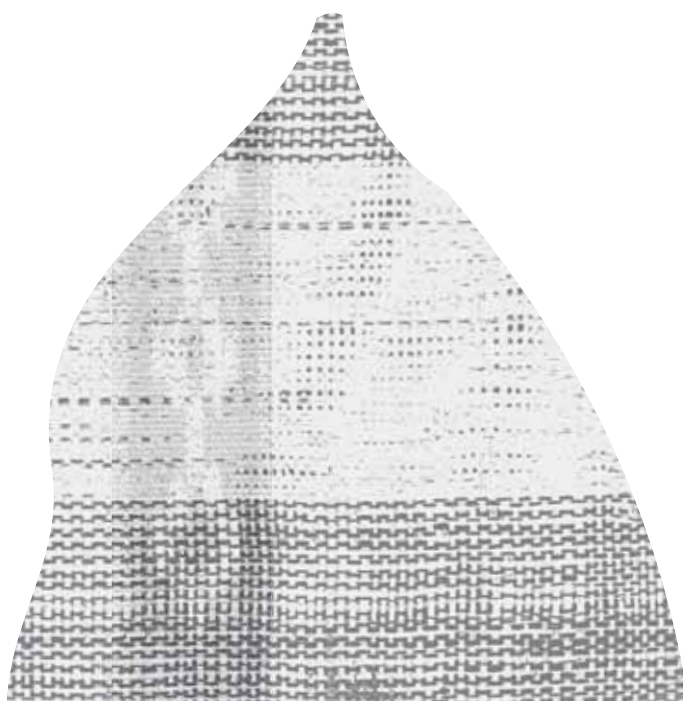
Opposite: Gretchen Sibonga is one of the students at Gerardo Astilla Sr. High School, Malamba, near Davao City, who is growing up with landcare.



This manual is intended as a guide for new landcare facilitators in the country's rural communities. These facilitators include the agricultural technicians of the provincial and municipal agriculture and natural resources management offices, the development facilitators of the national government agencies (such as the Department of Agriculture, the Department of Environment and Natural Resources, the Department of Agrarian Reform, and the National Commission on Indigenous Peoples), the community organisers and project officers of non-government organisations, and the farmer technicians and *barangay* extension workers of farmers' associations in the *barangays*. As well as a step-by-step guide, the manual provides practical and important tips on integrating and implementing landcare in ways that complement the programs and projects already operating locally. The manual is a response to a demand from our many partners—local policymakers, local chief executives, agriculture and natural resources officers, development workers, and community and farmer leaders—for practical information on how they can adopt and make landcare relevant to the needs and opportunities of their respective communities.

**Ma Aurora C. Laotoco**

Executive Director  
Landcare Foundation of the Philippines, Inc.



## Contributors

### Authors

#### Samuel G. Abrogar

I am married to Merlyn Galinada and we have two children. We live at *Barangay* Madaguig, one of the 24 *barangays* of Claveria, Misamis Oriental.

As a field facilitator with the Landcare Foundation of the Philippines, Inc., I am facilitating tree-growing partnerships between the wood industry and smallholder farmers, as part of the ACIAR Community Agricultural Technology Program.

I first learned about landcare back in 1998 and was elected as a director of the board of the Claveria Landcare Association. Once I was trained in the landcare technologies, I became a farmer trainer for the association, using hands-on demonstrations to help spread the word about agroforestry to other farmers. I also implemented the technologies on my own farm.

Establishing a farm-based ecotourism venture is my desire and passion—a showcase area where farmers can learn about agroforestry and adopting diversified, integrated, and natural farming systems that help to bring about ecological balance.



Email: [samuel\\_lfpi@yahoo.com](mailto:samuel_lfpi@yahoo.com)

#### Lyndon J. Arbes

I am the Regional Landcare Coordinator for northern Mindanao working for the Landcare Foundation of the Philippines, Inc. on the ACIAR–AusAID Philippines–Australia Landcare Project. From 1998 to 2008 I worked for the World Agroforestry Centre at its research site in Bukidnon on landcare projects funded by, among others, the Agencia Española de Cooperación Internacional and the International Fund for Agricultural Development.

I live in Don Carlos, Bukidnon with my wife Josephine Liu whom I met when she was a landcare volunteer. We are blessed with two children, Earl Laurence and Paul Hans.

I am passionate about improving the lives of the marginal farmers in the uplands of Mindanao and helping people to use the environment in a more sustainable way.



Email: [lyndon\\_lfpi@yahoo.com](mailto:lyndon_lfpi@yahoo.com)



Email: rojo\_lfpi@yahoo.com

### Rojo B. Balane

The priest baptised me Roy Joseph but my friends like to call me Rojo (raw-dew). For the past 10 years I have worked with communities and farmers helping them to improve their livelihoods and manage their natural resources. I first got involved with landcare in 2005 when the World Agroforestry Centre appointed me as Landcare Coordinator for Bohol under the ACIAR–AusAID Philippines–Australia Landcare Project.

I grew up in Bohol, in the middle of the province's rice granary. At an early age I worked on my grandparents' farm during summer vacation, harvesting corn or planting rice. It was not much fun, with back pains after each day spent in the paddy, and I always thought that there must be an easier way to plant rice. But I cherished the times I'd get to ride the carabao and I learned to manoeuvre the slopes toward the river where I was thankful to cool off.

In college I studied agriculture, thinking that I'd do better with the plough than the cloth or the bar. I've always dreamed of setting up my own small farm and, guided by the success stories that I've read, showing others the way to 'farming without the back pain'.

### Henry S. Binahon



Email: hbinahon@yahoo.com

My wife Perla and I manage our farm in Lantapan, Bukidnon. We have two children, Henry Mark and Pearlie Jane, both tertiary students. We are dependent on our farm income for basic needs and education.

I am a member of the Board of Trustees of the Landcare Foundation of the Philippines, Inc. I served as vice-president for two terms and president for two terms. I also participate actively in local organisations that have agriculture and natural resource management functions.

I am a practitioner of landcare. Having established and developed a model farm for conservation, I have made it a landcare education venue for farmers, technicians, researchers, students and other interest groups. We share our initiatives with our fellow farmers in the locality and educate our visitors in the concepts and principles of landcare and conservation farming, as a strategy for socioeconomic stability and sustainable ecosystem management. Since getting involved in landcare, I have made landcare a way of life.



### **Jessan S. Catre**

I am 38 years old, married and living in Davao City, Mindanao. I work with Catholic Relief Services (CRS) as an agroenterprise project team leader. In this role, I provide specialist technical support services on marketing to the ACIAR–AusAID Philippines–Australia Landcare Project. I help landcare groups to market their produce profitably through collective efforts.

I became aware of landcare in 2004 when I visited Lantapan, Bukidnon. In 2007, I was part of a CRS team that evaluated our involvement in the landcare project in Agusan del Sur. Shortly after that I got formally involved with the project and have now seen landcare implemented in South Cotabato, Bukidnon, Misamis Oriental and Bohol. I am impressed by the dynamic partnerships built, the appropriate technologies introduced and the effective extension approach employed.

I'm enthusiastic about the potential of landcare to harmoniously combine natural resource conservation, production and livelihoods for the rural poor. I also believe landcare can become a national movement of farmers and fishers changing upland, lowland and coastal landscapes and mindscapes.



Email: [jcatre@ph.seapro.crs.org](mailto:jcatre@ph.seapro.crs.org)

### **Geramil G. Cordero**

I am a landcare facilitator with the World Agroforestry Centre, working on an ACIAR-funded watershed research project in Bohol. Originally from Bukidnon in northern Mindanao, I am married to Honey Mae Solano and we have two sons, Jeremy and Julian. We live in Tagbilaran, Bohol.

I started my landcare career as a volunteer for the World Agroforestry Centre and the Agencia Española de Cooperación Internacional where I helped to implement landcare in Lantapan in the municipality of Bukidnon.



Email: [icraf\\_bohol@yahoo.com](mailto:icraf_bohol@yahoo.com)

### **Maria Noelyn S. Dano**

Originally from Bohol, I am now in Australia doing postgraduate studies in environmental management and development.

I first got involved with landcare in 2005 when I worked with the World Agroforestry Centre as the Philippines Coordinator of the ACIAR–AusAID Philippines–Australia Landcare Project. I coordinated research and monitored progress in the field. I helped to integrate development initiatives of the Landcare Coordinators Network across priority provinces in the southern and central Philippines. I also researched the institutional support structure for landcare in the Philippines as part of the project.

What really excites me about landcare is being able to link voices from the field with policymakers.



Email: [noelyn\\_dano@yahoo.com](mailto:noelyn_dano@yahoo.com)



Email: emily\_lfpi@yahoo.com

### **Emily L. Garcia**

My involvement in landcare started in 1999 under the first phase of the ACIAR–AusAID Philippines–Australia Landcare Project. I was the Project Management Assistant looking after the administrative and logistical needs of project staff. I was also involved in gathering and analysing data. I joined the facilitators on field trips to learn and understand fieldwork.

During Phase 2 of the project (2004–07), I was the Project Management Associate providing the whole project team with administrative and logistical support during meetings and workshops. I am currently the Administrative Officer for the Landcare Foundation of the Philippines, Inc. under Phase 3 of the project.

I am passionate about the dedication of our team and our partners to their work, and their commitment and willingness to learn from one another and to apply this learning in their everyday work.



Email: alaotoco@yahoo.com

### **Maria Aurora C. Laotoco**

My full name is Maria Aurora C. Laotoco. I like it better if people just call me 'Au'. I am the Executive Director of the Landcare Foundation of the Philippines, Inc. (LFPI), based in Claveria, Misamis Oriental.

My first involvement with landcare was in 1998 as the Municipal Planning and Development Officer of the municipality of Claveria. I was so impressed by its potential to make a meaningful difference that, in 1999, through the World Agroforestry Centre, I joined the first ACIAR–AusAID Philippines–Australia Landcare Project as a landcare facilitator. In 2005 I joined LFPI.

I am passionate about the potential for landcare to guide local communities in conserving their natural resources while improving their livelihoods.



## Lorena B. Loma

I consider landcare as my first career journey because it deals with people in the community, which is one of my interests. It was a great opportunity for me to be involved in the ACIAR–AusAID Philippines–Australia Landcare Project, implementing landcare in South Cotabato. Based in *Barangay* Ned, I was able to work closely with the Ned Landcare Association.

Personally, I realised that the project we implemented was effective and productive, not only for community development but also in building my character, confidence and professionalism. I am passionate about strengthening the Ned Landcare Association by linking it with service providers.

As the demand for landcare increases, I continue to believe with confidence that we can take landcare an extra mile and make a real difference.



Email: lorena\_lfpi@yahoo.com

## Agustin R. Mercado, Jr.

As Research Manager at the International Rice Research Institute – World Agroforestry Centre's research site in Claveria, I coordinate and implement the World Agroforestry Centre's research program.

My work focuses on improved conservation-oriented agroforestry systems for sloping lands. Current research is focused on the management of soil fertility on the natural terraces, and the development of smallholder farm forestry with short-cycle tree species and horticultural crops such as tropical fruits and vegetables. I have been involved in testing practical methods by which conservation farming technology can be diffused within and among farm communities.

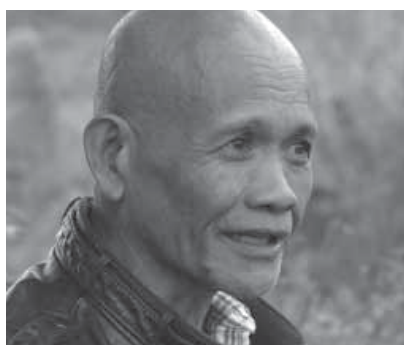
I facilitated the country's first landcare initiative in Claveria in 1996, and still help landcare organisations to link up with non-government organisations, government line agencies, and academic and other institutions to promote exchange of information at the local, regional and national level.

I have a BSc in Agriculture specialising in agroforestry from Bohol Agricultural College, and an MSc in Environmental Management from Liceo de Cagayan University. I completed a PhD degree at the University of Hohenheim in Germany and was conferred *magna cum laude*. Prior to joining the World Agroforestry Centre, I worked for the International Rice Research Institute on an acid-soil upland rice-based farming systems project in Claveria. The project looked at soil fertility management, upland rice cultivar evaluation and conservation farming.

I have published a book and many journal articles about conservation farming, agroforestry research and development, and the landcare approach. I live with my wife and four children in Poblacion, Claveria, Misamis Oriental.



Email: agustin9146@yahoo.com



Email: mspatindol@yahoo.com

### Marcelino M. Patindol

I am 60 years old, married, and graced with three children, Marel, Elmar and Arcelin, who are all grown up and have their own professions. I also have an adopted son, Charlie Mark Dacanay, a third-year accountancy student at Xavier University. I live in Claveria, Misamis Oriental.

I was one of the first farmers in the Philippines to be involved in landcare when it started in 1996 as a collaborative initiative between Claveria farmers, researchers from the International Centre for Research in Agroforestry (now the World Agroforestry Centre) and officers of the Claveria Local Government Unit. We came up with the name 'Land Care' and formed the Claveria Landcare Association, which has remained a dominant force in the development of landcare, not only in Claveria but throughout the Philippines. I was honoured to be the association's founding president.

Since those early beginnings, landcare has thrived and expanded and I have continued to support and encourage it wherever possible. In 1998, I was recognised by the Tekno-Gabay Program of the Philippine Council for Agriculture, Forestry and Natural Resources Research and Development as one of the 'farmer scientists' in my region (Region 10). I also make myself available to help with landcare training. I am proud to be one of landcare's founders and my farm is a demonstration of landcare's success.

### Eldon A. Ruiz



Email: eldon\_ifpi@yahoo.com

I am married to Concesa Berdin Ruiz and blessed with two sons, EC Krajeck and Keefer Keith. I live in Koronadal City, South Cotabato. Working with the Landcare Foundation of the Philippines Inc., as the Regional Landcare Coordinator for southern Mindanao, I am responsible for introducing landcare initiatives in the region.

I first learned about landcare in 1999 when I worked as a landcare facilitator covering the Ned area in Lake Sebu, South Cotabato, under the first phase of the ACIAR–AusAID Philippines–Australia Landcare Project. I became the provincial landcare coordinator in the second phase of the project from 2004–07, responsible for introducing landcare initiatives to other municipalities in South Cotabato.

My career with landcare started and grew with an ACIAR-funded project implemented by the Southeast Asian Regional Center for Graduate Study and Research in Agriculture based at the University of the Philippines Los Baños, Laguna.

I practise landcare on my own farm and am excited about developing it as a learning and earning site.



## Alexander U. Tabbada

I am a believer in landcare and in the local capacities on which it is anchored. As Research Manager of the Landcare Foundation of the Philippines, Inc., I work with landcare teams from the ACIAR–AusAID Philippines–Australia Landcare Project to promote, further and practise landcare in northern Mindanao, southern Mindanao and the Visayas, across various development themes such as poverty alleviation, food security, sustainable agriculture and peace building.

My hands-on involvement with landcare started in the summer of 2002 when I became the Natural Resource Management Officer and Site Coordinator of the World Agroforestry Centre (ICRAF) in Lantapan, Bukidnon. My key contribution to landcare in the Philippines has been its scaling up in 144 *barangays* in 38 municipalities in six provinces in Regions XI and XII. This work was part of the collaborative project ‘Enhancing the Upland Extension System in Southern Mindanao’, which was implemented by ICRAF Philippines and the EU-funded Upland Development Programme in Southern Mindanao from 2004 to 2007.

Being involved in the development of this book has been professionally fulfilling for me. It has given me the opportunity to share the landcare knowledge, skills and experiences—in leading teams, capacity building, monitoring, research and extension—which I have gained directly and indirectly under various donor projects and in different capacities and functions.

## Nelson F. Tomonglay

I work with the Landcare Foundation of the Philippines, Inc. on the ACIAR–AusAID Philippines–Australia Landcare Project as a landcare facilitator for northern Mindanao. I was involved in the beginning of landcare in the Philippines in 1996 as a member of the contour hedgerow extension team that represented the local government unit of Claveria.

I live in Claveria, Misamis Oriental, with my wife Bebelyn Besa and our four children, John Mark, Daniel, Paul Archie and Nelson Jr. I use landcare technologies on my 6,000 square metre farm. I love to mark each memorable family event (such as birthdays) and national events (such as Independence Day) by planting a tree.



Email: alex\_lfpi@yahoo.com



Email: nelson\_lfpi@yahoo.com

## Coordinators/editors

### Noel Vock



Email: [noel.vock@dpi.qld.gov.au](mailto:noel.vock@dpi.qld.gov.au)

I am an extension officer with the Queensland Government Department of Primary Industries and Fisheries, based at the Maroochy Research Station in Nambour, Queensland, Australia. For the past 10 years, as Project Leader of the ACIAR–AusAID Philippines–Australia Landcare Project, I have been fortunate to have been involved with a wonderful team of people in developing and testing a different approach to rural community development. I thank them and the farmers and partner agencies they serve for the experiences they have provided to me and my family—truly a life-changing experience.

I have been working in extension in subtropical horticulture for almost 40 years. I have a particular interest in the adoption of technologies by farmers and in how farmers can influence the development of new technologies through being involved in research design and implementation.





## Jenni Metcalfe

I am Director of Econnect Communication, an Australian-based company specialising in communicating about science and the environment. We are passionate about helping to protect our natural environment.

My first contact with the Philippines–Australia Landcare Project came at Easter in 2003 when I was invited to meet with members of the project at the Australian Landcare conference in Darwin to discuss helping them to write a book. The result of this meeting was the book: *Landcare in the Philippines: stories of people and places*, published by ACIAR in 2004.

I worked with the landcare facilitators to collect stories, match them with photos and structure the book.

I have been privileged to visit landcare sites in the Philippines three times. On each occasion I have been both humbled and inspired by the efforts I have witnessed and the people I have met. During my last visit, I worked with Mary, Noel and the contributing authors to develop the concept for this manual.

I am very supportive of landcare in the Philippines and will continue to support the efforts of landcare facilitators to improve people's livelihoods and protect the environment.



Email: [jenni@econnect.com.au](mailto:jenni@econnect.com.au)

## Mary O'Callaghan

Landcare, *lechon* and laughter—this sums up my visit to the Philippines in December 2007. I had travelled from Australia, where I work with Econnect Communication as a writer and editor, to share with the authors of this manual some tips about writing. Their willingness to learn was wonderful and I learnt a lot myself about cultural differences in the use of language. My subsequent trip to South Cotabato, Agusan del Sur and Bohol to see firsthand some of the landcare sites was unforgettable. I am thrilled to have the chance to play a small part in the making of this book.



Email: [mary@econnect.com.au](mailto:mary@econnect.com.au)

## Acknowledgments

The Australian Centre for International Agricultural Research (ACIAR) and the Landcare Foundation of the Philippines, Inc. (LFPI) have made this manual possible.

Special thanks go to Noel Vock from Queensland's Department of Primary Industries and Fisheries. As Project Leader of the ACIAR–AusAID Philippines–Australia Landcare Project, Noel motivated all the contributors and led the process of producing this manual, with the support of Maria Aurora Laotoco, Executive Director of LFPI.

Thanks also go to Jenni Metcalfe and Mary O'Callaghan from Econnect Communication who mentored the authors, which included running a writing workshop to help the authors identify the readers of this manual, and to structure and write the content to meet the needs of these readers. Jenni and Mary also visited landcare sites in South Cotabato, Agusan del Sur and Bohol to collect stories and take photographs to illustrate the manual. In reviewing, editing and managing the publication process for this manual, Econnect Communication continues to provide support and services to the Philippines–Australia Landcare Project team, much of this on a *pro bono* basis. This long-term generosity towards Philippines landcare started with the production of the first landcare book, *Landcare in the Philippines: stories of people and places*, published by ACIAR in 2004. Since then, they have, at no cost to the project, published an online newsletter for the project, advised the project team on a wide range of communication issues, and donated funds to schools and landcare staff in the Philippines. The authors are delighted to have had the opportunity through this manual to continue the association with Econnect Communication.

Jo Marie Libarnes, a VSO volunteer from the Philippines, has been working with farmers and local government units to develop a landcare program in Indonesia. She kindly provided a critique of the book from the perspective of a new landcare facilitator.

Delia Catacutan, Mindanao Research Officer for the World Agroforestry Centre and a highly experienced landcare practitioner, provided advice and support.

Betty Fueconcillo works with Catholic Relief Services on its Landcare in Schools Program. She was previously a landcare facilitator with the ACIAR–AusAID Philippines–Australia Landcare Project and kindly arranged for the authors to visit schools in Malamba, near Davao City, and landcare sites in Agusan del Sur to collect stories and photographs.

We thank the contributors for providing photographs to illustrate the manual.



## Abbreviations and acronyms

|           |   |
|-----------|---|
| ACIAR     | Australian Centre for International Agricultural Research   |
| AusAID    | Australian Agency for International Development   |
| BAW       | <i>barangay</i> agricultural worker   |
| BAFTECH   | <i>barangay</i> farmer technician   |
| CRS       | Catholic Relief Services  |
| DENR      | Department of Environment and Natural Resources<br>(Philippines Government)                       |
| FTG       | farmer trainer group  |
| LFPI      | Landcare Foundation of the Philippines, Inc.  |
| LGU       | local government unit   |
| MOSCAT    | Misamis Oriental State College of Agriculture<br>and Technology                                   |
| NGO       | non-government organisation   |
| NVS       | natural vegetative strips   |
| PACAP     | Philippines Australia Community Assistance Program  |
| PCARRD    | Philippine Council for Agriculture, Forestry and Natural<br>Resources Research and Development    |
| PILAR DAM | Productivity Improvement through Landcare and<br>Agricultural Research Development And Management |
| SALT      | sloping agricultural land technology  |
| UDP       | Upland Development Programme in Southern Mindanao   |

