



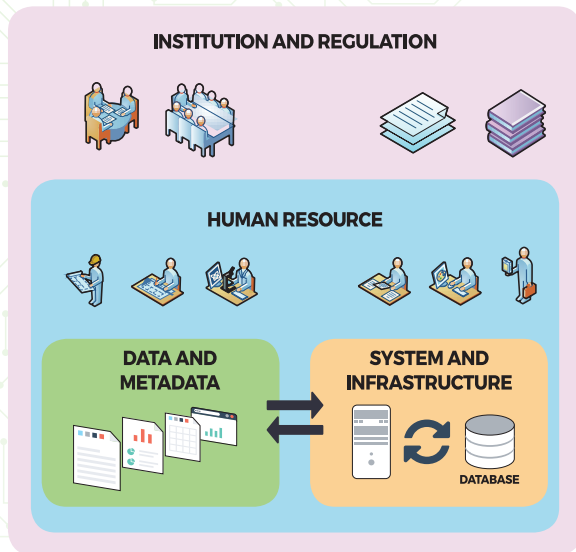
INSTANT
Information System for Sustainable Land Development



INFORMATION SYSTEM FOR SUSTAINABLE LAND DEVELOPMENT

WHAT IS INSTANT?

Information System for Sustainable Land Development (INSTANT) is a framework to empower local stakeholders in managing, processing, and visualizing spatial and non-spatial data of land resources in support of sustainable development planning. INSTANT is equipped with a web-based tools which enable a fast, easy and informative data and information management by local stakeholders to provide accurate, valid, transparent and updated data and information regarding land, land use and land resources.



INSTANT framework is conducted through four processes:

1. Assist the establishment of best available **data and metadata** through participatory approaches in accordance with the national and global standards of data and information management
2. Support the development of **system and infrastructure** as a basis for independent, effective and efficient interactions across stakeholders through information technology
3. Strengthen capacity to establish capable **human resources** actively involved in the process of data and information management for sustainable development
4. Facilitate establishment of **regulation and institution** to provide certainty of rules, guidelines, forms, roles, and responsibilities for all involved stakeholders

WHY INSTANT?

Land resource and land use planning process are the main pillar for sustainable development in developing countries. The planning process can only be conducted based on accurate, valid and up-to-date database and information. More importantly, the database should be established through involvement of key stakeholders with their various backgrounds and expertise. However, in most cases, the data is not available due to several reasons: lack of awareness in the importance of integrative database, traditional sectoral mindsets which brought people to work in silo, no simple and easy-to-use tools to enable multistakeholders cooperation in data management, and no policy or guidelines for the establishment of integrative database. In many cases, important data and information related to the management of land resources were scattered in various institutions and not used effectively for land resource and land use planning process.

INSTANT framework strives to break the barriers of data management by raising awareness on the importance of unified data and information, providing tools and method for data inventory and management and conducting institutional and technical capacity strengthening process.



Data and information
scattered in various
institution



Data duplication



inaccurate data

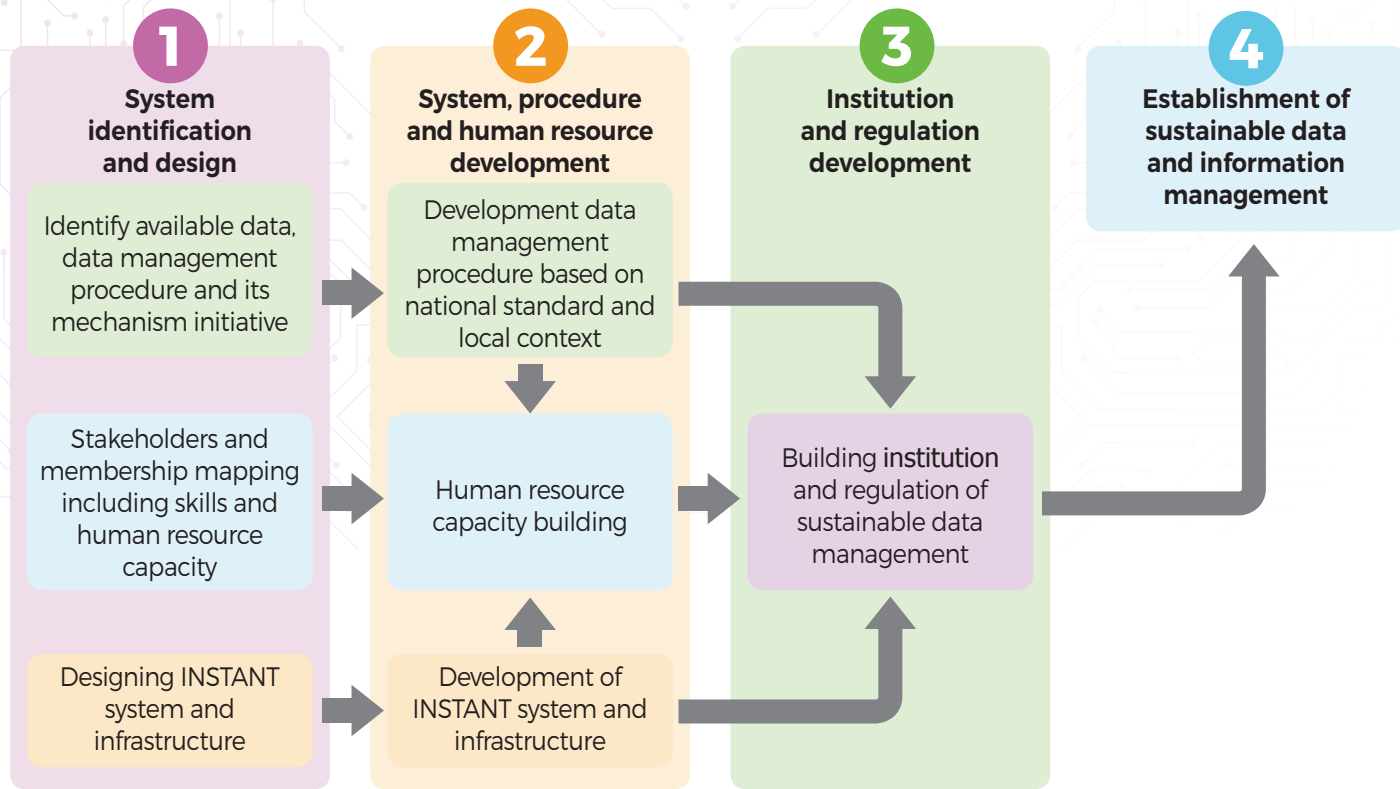


Data is not
accessible



Data is not
up to date

HOW DOES INSTANT WORK?



HOW INSTITUTIONAL DEVELOPMENT USING INSTANT FRAMEWORK?

1

Identify all relevant stakeholders and working groups related to sustainable data and information management



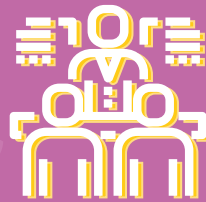
2

Select membership in data and information management



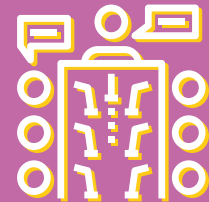
3

Formulate the working group form and its regulation in a participatory manner with relevant stakeholders





4


Establish sustainable data and information management institution





WHAT ARE **INSTANT** WEB-BASED TOOL FEATURES?


- 

1 Interactive and accessible web-based data portal
- 

2 Developed based on open source platform
- 

3 User-friendly data sharing interface
- 

4 Accommodate various spatial and non-spatial data formats
- 

5 Integration to national database system (ex: INA-Geoportal system) and other similar system
- 

6 Provide ready-to-use information according to user needs. (ex: Information system for low emission development, information system for regional development)



WHERE IS **INSTANT** IMPLEMENTED?

As of 2017, INSTANT has been implemented in four districts in three provinces in Indonesia: Banyuasin in South Sumatra, Banyumas in Central Java, and Jayapura and Merauke in Papua.



Banyuasin Regency: <http://simbangda.banyuasinkab.go.id> | **Banyumas Regency:** <http://simda-ekonomihijau.banyumaskab.go.id>
Jayapura Regency: <http://simbangda.jayapurakab.go.id> | **Merauke Regency:** <http://pusat-data.merauke.go.id>



For more information about INSTANT

M. Thoha Zulkarnain (m.zulkarnain@cgiar.org) | Andree Ekadinata (a.ekadinata@cgiar.org)

World Agroforestry Centre (ICRAF) - Southeast Asia Regional Program

Jl. CIFOR, Situ Gede, Sindang Barang, Bogor 16115 [PO Box 161 Bogor 16001] Indonesia

Tel: +(62) 251 8625 415 Fax: +(62) 251 8625416

www.worldagroforestry.org/region/southeast-asia | blog.worldagroforestry.org