



Community Carbon Pools Programme

Gen. Nakar, Quezon Province

Edmund Leo B. Rico

Programme Officer / EU REDD National Coordinator

12 April 2012

**Environmental Service Market Fair
Trader's Hotel, Roxas Blvd., Pasay City**

Community Carbon Pools Programme

Southern Sierra Madre Redd+ Readiness

A NATIONAL REDD+ PILOT

**Strengthening Local
Forest Governance in
Southern Luzon
Project**

**Developing
Community Carbon
Pools for REDD+ in
Selected ASEAN
Countries**





Strengthening Local Forest Governance in Southern Luzon Project 2010-2014

Objectives

- overall goal- **conservation of forest and biodiversity**
- overall objective – **development of sustainable finance mechanisms**

Immediate objectives

- Strengthen the capacity of local governments and forest dependent communities to protect forest and biodiversity.
- Develop sub-national REDD policies for provincial and municipal levels within the national REDD policy framework.
- Develop pilot REDD projects delivering financial resources to forest dependent communities and local governments.



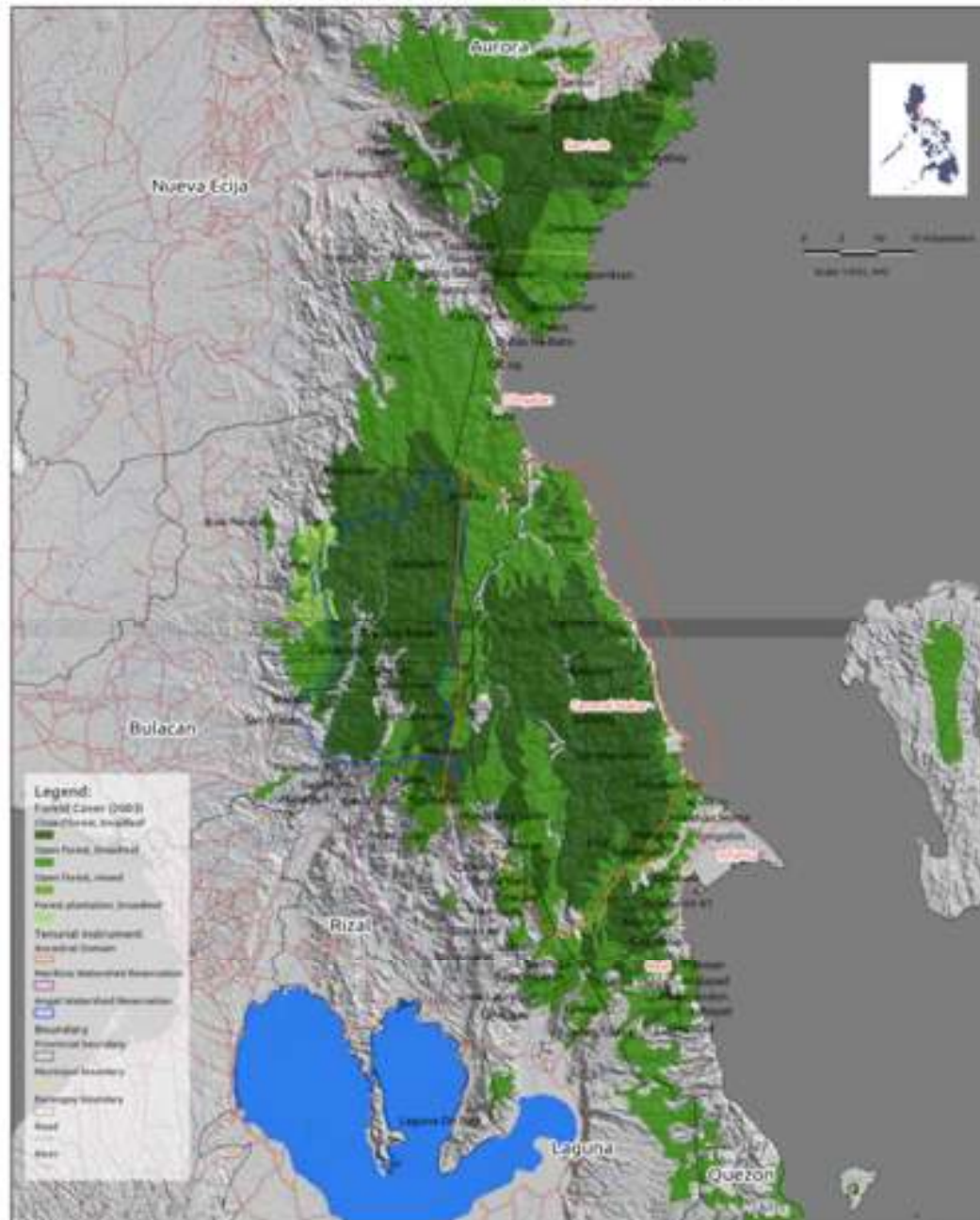
Developing Community Carbon Pools for REDD+ in Selected ASEAN Countries (2011-2013)

Objective

- Result 1: **National REDD+ policies that strengthen community participation and the role of local governments** in 4 countries
- Result 2: Sub-national **REDD+ procedures and regulations** developed in 4 pilot sites with active **civil society participation**
- Result 3: **Community carbon pools established**, with equitable benefit sharing mechanisms, based on community forest tenure in 4 pilot sites
- Result 4: **High Conservation Value Forests (HCVF)** protected in pilot project landscapes

Countries : Indonesia, Cambodia, Vietnam and Philippines

Southern Sierra Madre, Philippines



Location

General Nakar,
Quezon Province

N 14° 45' 25.47"
E 121° 137' 15.29"



Innovative conservation since 1903

Site Profile and Project Beneficiaries

Total Population ~ 25,000

Home to the Agta-Dumagat-Remontado Tribes (~ 5,000)

Largest Ancestral Domain in the Philippines ~ 164,000 Ha (144,000 land/20,000 ancestral waters)

Key Biodiversity Area

- 20 Threatened Fauna
- at least 15 critically endangered Trees

Critically endangered lowland Dipterocarp and mid-montane forest

Major watershed for Metro Manila (17 Cities)





Ecosystem Services the Area Provides

- Culture – Agta-Dumagat-Remontado Ancestral Domain
- Watershed – fresh water supply to Metro Manila and adjacent municipalities
- Biodiversity – Key Biodiversity Area
- Timber – house construction and fuel wood requirement
- History – Birthplace of Gen. Guillermo Nakar (WWII Hero)
- Typhoon Break
- Eco-tourism
- Traditional Farming
- Pollination

PES on REDD plus

Conservative estimate for credits on Avoided Deforestation

Project Area (144,000ha) = 50,000 Ha (forest)

Area of forest being avoided to be deforested

= 3,500 ha (at 7% annual deforestation rate)

Carbon Content (IPCC default value) = 165mtC/ Ha

Carbon Credits = 3,500 ha X 165 mtC/ha = 577,500 mtC

Thematic updates and on-going activities

- Community
- Carbon Accounting
- Biodiversity
- Legal and Policy



Community

Free Prior and Informed Consent

- FPIC 1 for the assessment/reddiness phase
 - Full endorsement of the tribal group
 - Certificate of Precondition is underway
- FPIC 2 for actual REDD project/
carbon trading



Community

Securing the Tenure

Ancestral Domain Sustainable Development Protection Plan (ADSDPP)

- ADSDPP MOA signed in 06 January 2011 (w/ NTFP, Sagibin, Tribal Governor and NCIP)



Community

Livelihood and Enterprise Development

- placed up-front with the community's request
- to manage a driver of deforestation (charcoal production)
- construction of the honey processing plant started late last year
- installation of solar panels in the indigenous people's school.
- Seedling and handicraft production



Community

Livelihood and Enterprise Development

Organizational Development

- sustainable honey harvesting orientations in 22 indigenous people settlements
- handicraft production trainings
- Marketing and Financial management trainings



Marketing of NTFPs

- Seedling production (P107,000.00 in May to June and new deal worth P750,000)
- Honey and handicrafts sales outlets identified



Carbon Accounting

- On-going research on the tenurial instruments in place at the project site.
- Draft manual for carbon accounting was prepared upcoming community carbon stock training on April-May
- Production of forest inventory manuals, carbon stock assessment and conduct of trainings will be jointly undertaken with World Agroforestry Center/ICRAF

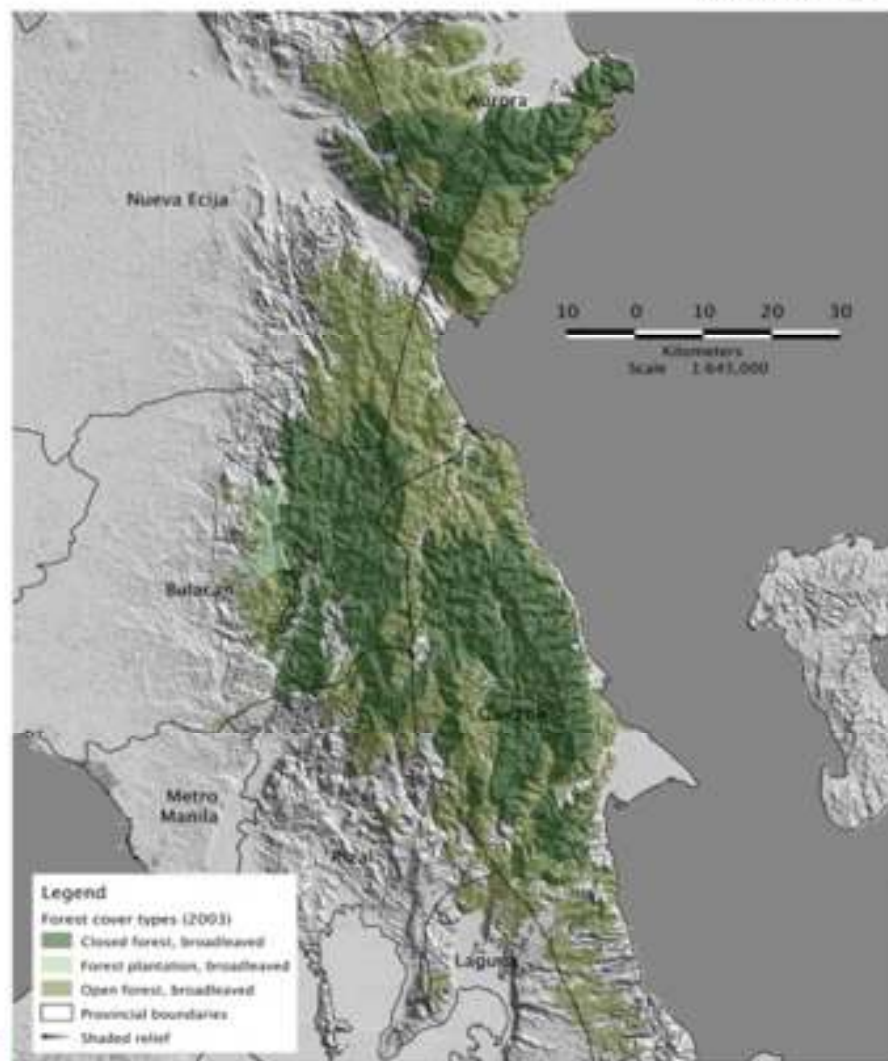
Carbon Accounting

Remote Sensing and Spatial Analysis

- University of the Philippines - Dept. of Geodetic Engineering (UP-DGE) and GIZ, FMB, NAMRIA -- partner in the development of the remote sensing approaches for Philippine REDD-plus projects.
- GIZ, FFI, and UP-DGE collaboration with the Japanese Aerospace Exploration Agency (JAXA) to access radar imageries (2012-2014) in support of REDD-plus MRV development
- Recently conducted a training on remote sensing (Feb 8-10, 2012) in collaboration with GIZ, UP-DGE, and PTFCF

Forest Cover Map

Southern Sierra Madre, Philippines 2003 Forest Cover Types



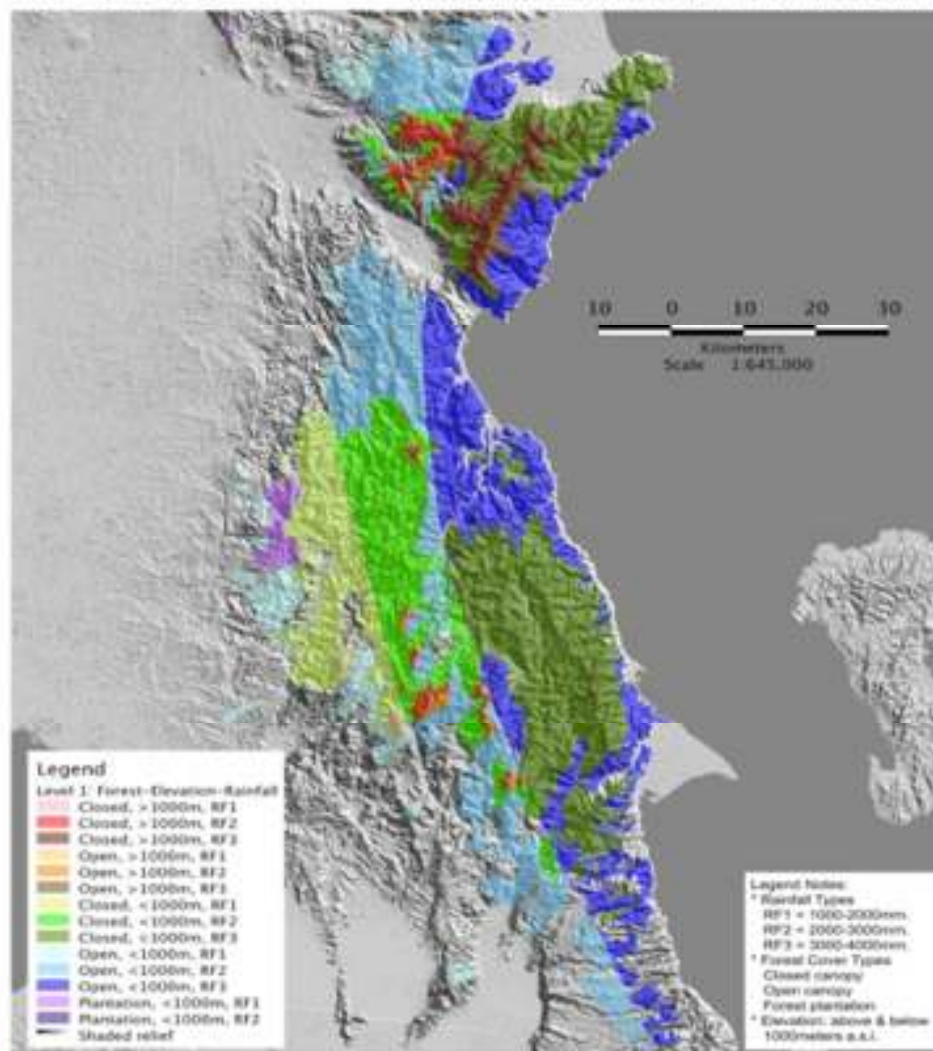
Map prepared: 2003; Forest cover classification by the National DENR of the Philippines; 2003; Shaded relief and elevation information derived from the DENR (2003) Digital Elevation Model version of the 2000 SRTM30 PLUS, and 2003; Source: DENR.

Preliminary Maps

Stratified Forest Cover Map

DRAFT COPY
NOT FOR CIRCULATION

Southern Sierra Madre, Philippines Level 1 Forest Stratification: Forest Classes, Elevation, and Rainfall



Map prepared: 2003; Forest cover classification by the National DENR of the Philippines; 2003; Shaded relief and elevation information derived from the DENR (2003) Digital Elevation Model version of the 2000 SRTM30 PLUS, and 2003; Source: DENR.

Pressures and Threats



Pressures and Threats



Charcoal Making

Pressures and Threats



Kaingin Farming

Biodiversity

- In April 2011, the seminal paper on the proposed Technical Framework for the Biodiversity Metrics on REDD+ projects was published.
- National Museum of the Philippines, Field Museum and Kansas University will join us in the assessment of the two REDD sites as well as to co-develop methodologies/monitoring protocols needed for REDD+.
- Recently conducted the Biodiversity Assessment in Southern Leyte for GIZ/NewCapp

Biodiversity Assessment in Southern Leyte



Legal and Policy

- On-going review of the Forest Land Use Plan of Gen. Nakar and other local and national statutes within the project area (e.g. IPRA, NIPAS, etc.)
- Support policy studies on Carbon Rights, FPIC, Philippine Forest Policies and Key Driver's of Deforestation
- Research on Benefit sharing schemes

SYNERGIES

- UNREDD Project (UN-REDD Philippines Programme: Supporting Initial Readiness Process)
- GIZ - REDD+ Project and PNRPS-Biodiversity MRV Development
- NewCapp (PAWB) - New Conservation Areas in the Philippines Project
- UNDP- BPP – Partnerships for Biodiversity Conservation: Mainstreaming in Local Agricultural Landscapes
- Marikina Watershed Initiative (PDRF/SMART)

Regional Knowledge Sharing Workshop

(Puerto Princesa City Feb2012)



Challenges

- stakeholder engagement
- government (national and local) participation on the ground
- potentially complex arrangement with four provinces
- technical components
- Funding gaps (establishment of plots, remote sensing analysis, social impact assessment, REDD plus awareness campaigns)

Next Steps

- Formation of the Multi-stakeholder REDD+ Council/TWG
- REDD+ Orientations
- FPIC consultations with non-IP settlers
- Building “Golden Bridges”
- Forest Carbon and Biodiversity Assessment / Community Capacity Building
- Valuation of Biodiversity and Ecosystem Services

REDD+ Hub in Quezon





Project Partners and Collaborators



MARAMING SALAMAT PO!