

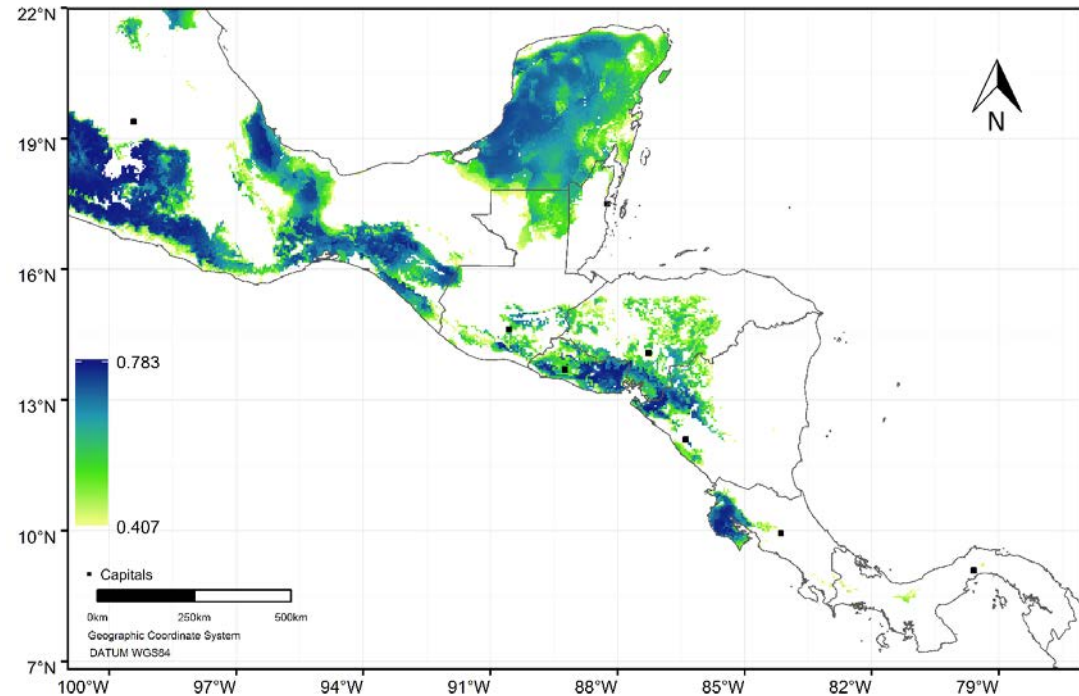
***Alvaradoa amorphoides* Liebm.**

**Family:**  
Picramniaceae  
**Vernacular names:**  
Ardilla (CR),  
caratillo (NI),  
cola de ardilla (GT),  
zorra (HN)

Whole plant attributes		Uses		Reproductive attributes		Stress tolerance	
<b>Growth form</b>	Tree	<b>Commercial timber</b>	No	<b>Reproductive system</b>	Dioecious	<b>Drought</b>	Unknown
<b>Plant height (m)</b>	18 (15 – 20)	<b>Timber uses<sup>1</sup></b>	CL-HF	<b>Pollination vector</b>	Insects	<b>Flooding</b>	Unknown
<b>Spinescence</b>	No	<b>Firewood</b>	Yes	<b>Weight 1000 seeds (g)</b>	9.96 (7.6 – 11.76)	<b>Frost</b>	Unknown
<b>N fixer</b>	No	<b>Fruit</b>	No	<b>Seed storage type</b>	Intermedia	<b>Shade</b>	Unknown
<b>Wood density (g cm<sup>-3</sup>)</b>	0.58 (0.56 – 0.59)	<b>Forage</b>	No	<b>Seed dormancy</b>	No	<b>Salinity</b>	Unknown
<b>Leaf phenology</b>	Evergreen	<b>Other uses</b>	Medicinal	<b>Seed dispersal</b>	Anemochory	<b>Fire</b>	Unknown

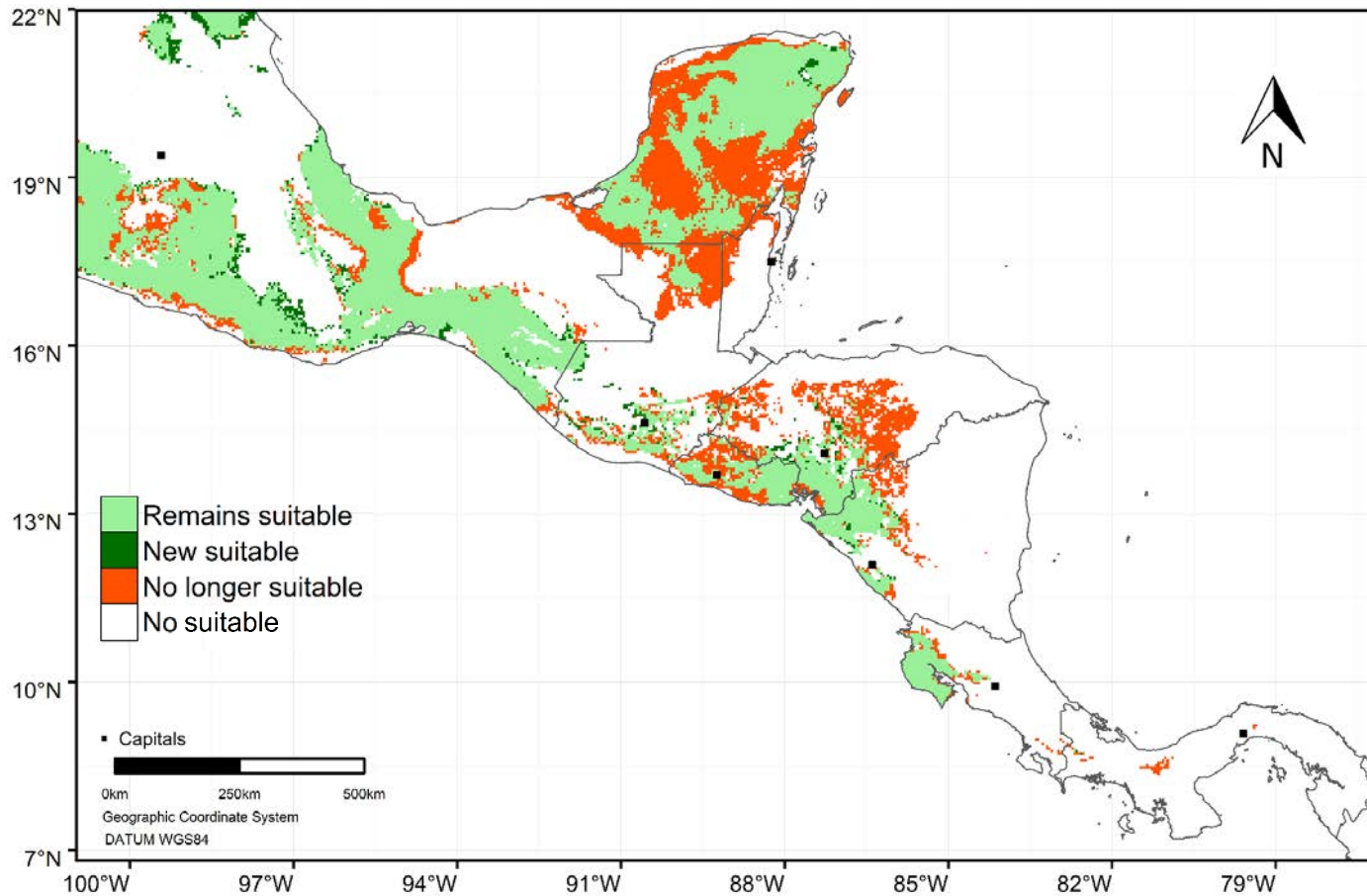
<sup>1</sup> SM= Suitable for Saw Mill; CS= Engineering and Structural Construction; CL= Light Construction; MB= Furniture; HF= Farm Tools; PS= Flooring; DT= Railway Sleepers; CH= Veneer; AR= Handicrafts

**Species suitable areas under current climate**



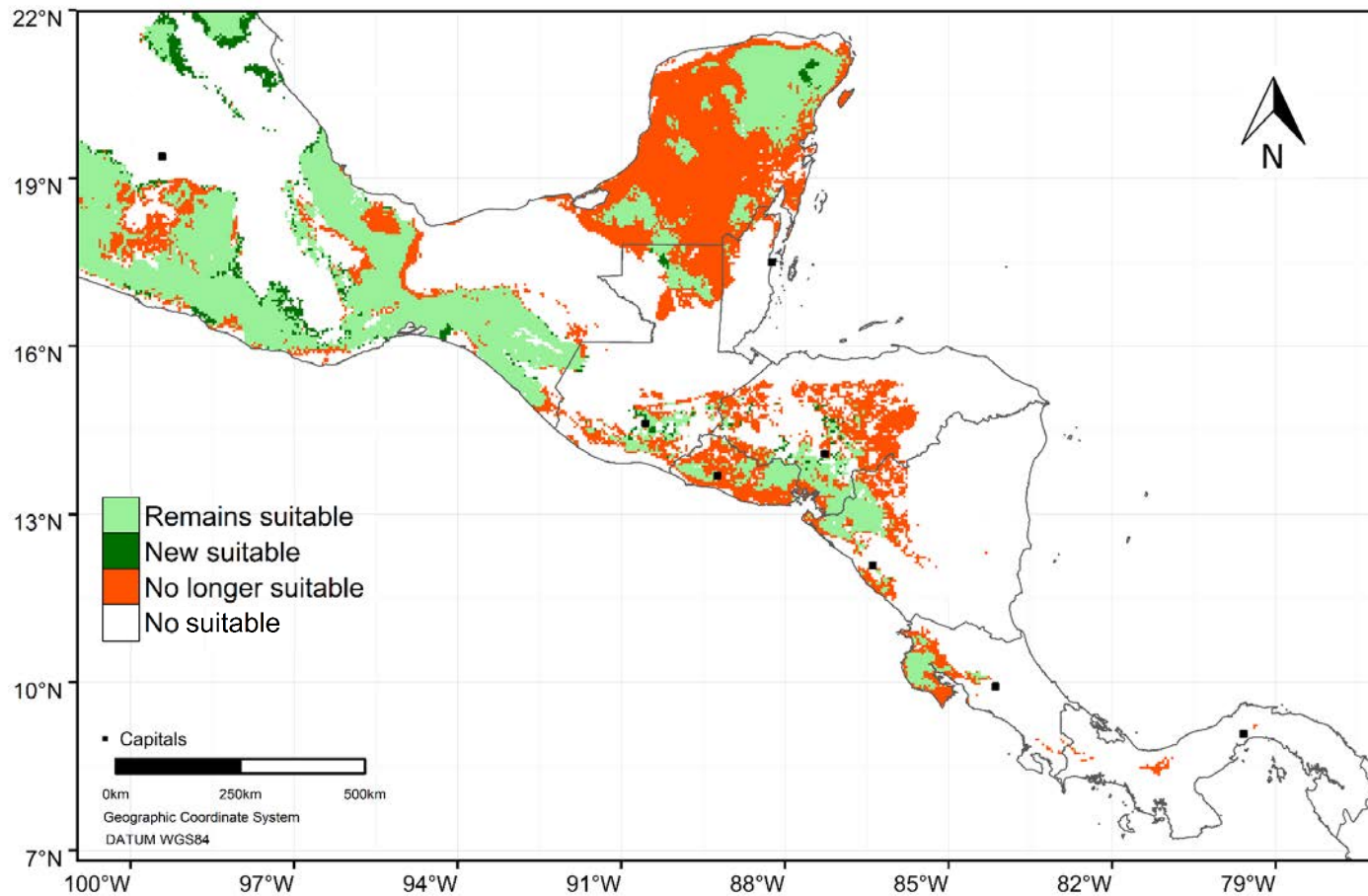
\* Areas in white in the map, indicate areas where the species is not suitable.

Suitability changes in year 2050 - scenario RCP4.5



Zone	Current distribution per zone (km <sup>2</sup> )	Remains suitable	Potential new habitat	No longer suitable	Net change
Dry forest	62,906	75%	5%	25%	-20%
Rain forest	39,112	54%	4%	46%	-42%
Whole region	102,018	67%	4%	33%	-29%

Suitability changes in year 2050 - scenario RCP8.5



Zone	Current distribution per zone (km <sup>2</sup> )	Remains suitable	Potential new habitat	No longer suitable	Net change
Dry forest	62,906	75%	5%	25%	-20%
Rain forest	39,112	54%	4%	46%	-42%
Whole region	102,018	67%	4%	33%	-29%

## Points of observed presence

